



6

MEMBERSHIP BRANCHES

2

OVERNIGHT CAMPS

13

DAY CAMPS

28

CHILD DEVELOPMENT SITES

4

PROGRAM BRANCHES

52

COMMUNITIES SERVED

## OUR CAUSE

**65,000**

youth and adults engaged with the Y through programs and facility memberships.

Close to

**\$1,000,000**

distributed in financial assistance to give more people access to Y programs and memberships.

Nearly

**1,000**

volunteers.

Nearly

**3,000**

supporters invested in their community with a donation to the Y.

## YOUTH DEVELOPMENT

**24,000\***

youth experiences through leadership activities and academic support in child and youth development programs.

Over

**15,000\***

camp opportunities where youth made friends, stayed active, and learned life skills.

## HEALTHY LIVING

Over

**4,200\***

people learned the life-saving skill of swimming.

**9,000**

senior members participated in programs, increasing physical activity and social interaction.

More than

**44,000**

meals or snacks were served to youth enrolled in preschool, summer camp, and after-school programs in Hartford, East Hartford, Putnam, and Rockville.

## SOCIAL RESPONSIBILITY

Over

**7,500\***

teens had a safe place to go and a caring adult role model by participating in Y programs.

Over

**85**

individuals participated in adaptive fitness programs, helping those with a physical disability achieve positive health outcomes.

\* Indicates duplicated participants enrolled in multiple program sessions.



Building  
**Who We Are**



Peter Olson, Board Chair, left, with Harold Sparrow, President and CEO

How do organizations like ours bear the weight of so many important responsibilities? After all, among those obligations are assuring financial sustainability, maintaining extraordinary staffing, developing exceptional program experiences, and keeping our facilities in the best possible condition.

There's only one way to do it: by ensuring we have a strong foundation. Without that, we could easily find ourselves in organizational quicksand.

So the question becomes: just what constitutes a strong foundation?

For one thing, we need employees and volunteers whose personal attributes make the difference between average accomplishments and extraordinary ones. Today, with a strong, consolidated group of volunteers and staff members with roles and responsibilities that have been clarified and reinforced, that's exactly what we have.

For another, we require a solid approach that, with strength and precision, supports our vision. Toward that end, we developed a formidable strategic plan, strengthened our bylaws, and challenged our leaders and volunteers to re-examine how we collaborate with external partners

Prior to 2023, we started to notice cracks and vulnerabilities in our footing. But instead of patching it here and there and hoping for the best, we decided to use it as an opportunity. Metaphorically speaking, we grabbed a sledge hammer and started over again. Not only did we rebuild, we reinvented. We re-envisioned the Y. We transformed. It was an incentive to take a hard look at our operations, needs, costs, and challenges, reassess our goals, guidelines, and approaches, and consider new projects and partners.

Here are just a few of our top initiatives, which benefit dozens of Y programs, from life skills and adaptive fitness, to youth and child development.

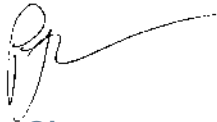
Our alliance with Ellis Technical High School in Danielson, CT, which teaches practical skills in masonry, carpentry, and other valuable trades, resulted in some tremendous improvements at Camp Woodstock, including a new patio and retaining wall near the lake. Dozens of youngsters were exceedingly proud of what they accomplished.

While we've worked with the national BellXcel program (Building Educated Leaders for Life) for several years, 2023 was the year in which the partnership blossomed, particularly at our Hartford, East Hartford, West Hartford, and Indian Valley branches. BellXcel was created to assure that over the summer break, children would be able to continue to learn math and literacy, as well as to have options to be involved with music, drama, and other artistic endeavors.

Interactive parent/child classes were reinforced in East Hartford, Farmington Valley, Glastonbury, Hale, Indian Valley, Tri-Town, West Hartford, Wheeler, and Wilson-Gray. Story time, crafts, free play, and other fun and creative endeavors for children 18 months through five years old were among the highlights.

We had many open and vibrant discussions on YMCA issues and challenges not only among ourselves, but also with such entities as the Hartford Police Department on safety and the East Hartford mayor's office on child development. In the latter case, the new administration changed zoning laws to accommodate community needs, one benefit of which was an agreement to let us open and operate a new childcare center at the East Hartford Y.

There are many additional successes, events, programs, and improvements rising from our new organizational footing that you'll hear about as the year progresses. With a stronger foundation, the possibilities of what we put on top of it can be bigger, brighter, and more ambitious than anything that was there before. But that takes teamwork. So let's stick together and continue to evolve the Y into an organization of which we will all be proud.



**Peter Olson**  
Board Chair



**Harold Sparrow**  
President and CEO

¿Cómo cargan con el peso de tantas responsabilidades importantes las organizaciones como la nuestra? Después de todo, entre esas obligaciones está garantizar la estabilidad financiera, mantener un personal extraordinario, desarrollar experiencias excepcionales a través de los programas y mantener nuestras instalaciones en las mejores condiciones posibles.

Hay solo una forma de hacerlo: asegurándonos de tener bases sólidas. Sin eso, fácilmente podríamos estar en encontrarnos en arenas movedizas organizativas.

Por lo tanto, la pregunta es ¿en qué consiste una base sólida? Por un lado, necesitamos empleados y voluntarios con atributos personales que marquen la diferencia entre logros promedio y extraordinarios. Hoy, es exactamente lo que tenemos, con un grupo fuerte y consolidado de voluntarios y miembros del personal con roles y responsabilidades claras y reforzadas. Por otro lado, necesitamos un enfoque sólido que, con fuerza y precisión, respalde nuestra visión. Con ese fin, desarrollamos un formidable plan estratégico, fortalecimos nuestros estatutos, y desafiamos a nuestros líderes y voluntarios para que reexaminen cómo colaboramos con socios externos.

Antes de 2023, comenzamos a notar grietas y vulnerabilidades en nuestros cimientos. Sin embargo, en vez de emparcharlas aquí y allá y cruzar los dedos, decidimos verlas como una oportunidad. Metafóricamente, las demolimos y comenzamos de cero. No solo reconstruimos, sino también reinventamos. Volvimos a concebir YMCA. Nos transformamos. Fue un incentivo para mirar detenidamente nuestras operaciones, necesidades, costos y desafíos, reevaluar nuestros objetivos, lineamientos y abordajes, y considerar proyectos y socios nuevos.

Estas son solo algunas de nuestras iniciativas principales, que benefician a docenas de programas de YMCA, desde las habilidades para la vida y la aptitud física adaptativa, hasta el desarrollo de los jóvenes y niños.

Nuestra alianza con Ellis Technical High School de Danielson, Connecticut, que enseña habilidades prácticas como la albañilería, la carpintería y otros oficios valiosos, resultó en mejoras extraordinarias en Camp Woodstock, incluidos un nuevo patio y un muro de contención cerca del lago. Docenas de jóvenes se llenaron de orgullo por lo que habían logrado.

Ya habíamos trabajado durante muchos años con el programa nacional BellXcel (Building Educated Leaders for Life, Construyendo líderes educados para la vida). Pero 2023 fue el año en que esa sociedad floreció, particularmente en nuestras sedes de Hartford, East Hartford, West Hartford e Indian Valley. BellXcel se creó para garantizar que, durante el receso de verano, los niños pudieran seguir aprendiendo matemática y lengua, además de tener opciones para participar en música, teatro y otras actividades artísticas.

Se reforzaron las clases interactivas para padres e hijos en East Hartford, Farmington Valley, Glastonbury, Hale, Indian Valley, Tri-Town, West Hartford, Wheeler y Wilson-Gray. Narración, manualidades, juego libre y otras actividades creativas y divertidas para niños de 18 meses a 5 años estuvieron entre las más destacadas.

Tuvimos muchos debates abiertos y animados sobre asuntos y desafíos de YMCA. No solo debatimos entre nosotros sino también con entidades como el Departamento de Policía de Hartford acerca de la seguridad y con el despacho del alcalde de East Hartford sobre el desarrollo infantil. En el último caso, la nueva administración modificó leyes zonales para satisfacer las necesidades de la comunidad. Entre los beneficios estuvo un acuerdo para dejarnos abrir y operar un nuevo centro de cuidado infantil en la sede de YMCA de East Hartford.

Hay muchos más éxitos, eventos, programas y mejoras que nacen de nuestros fundamentos organizativos y de los que escuchará hablar a lo largo del año. Con cimientos más sólidos, lo que podemos construir sobre ellos puede ser más grande, brillante y ambicioso que cualquier cosa que haya habido antes. Pero eso implica trabajo en equipo. Por lo tanto, unámonos y sigamos haciendo evolucionar a YMCA para que se convierta en una organización de la que todos estemos orgullosos.



"Amanda Feliciano, Director of Youth Impact, has been at the Y for seven years and with BellXcel for four. "I love the sense of discovery, joy, and wonder of all my kids," she says. "That's a gift to me."

## Building Curiosity

The BellXcel free summer learning and enrichment program for K-5 students is a great way for kids to avoid losing valuable midyear learning and development time, which is typically what happens when school is out. One family at the Wilson-Gray branch in Hartford has benefited tremendously because of the on-site peace-of-mind it offers, the financial assistance it provides, and the happy kids it sends back home. Twelve-year-old Alexander and eight-year-old Elizabeth enjoy the fun, while mom Veronica and dad Kwame appreciate the support.



"Families need options," Veronica says. "Programs like BellXcel positively impact the entire family. Having a safe space for our children is important, and so is being where they can blend with people of different backgrounds."



As imperative as individual studies and activities are, Kwame points out that the highly-committed staff is just as integral to its success. "They make the program!" he says gratefully.

Alex has a hard time picking his favorite activity—so instead he mentions several, including creative writing, cooking, and scurrying around on a beloved speedy toy scooter.

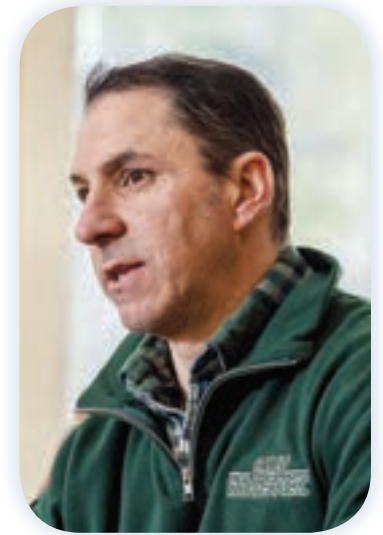


Elizabeth didn't have to think too long to come up with the thing she likes most about BellXcel: "I'm never lonely," is her quick, genuine, and earnest response.



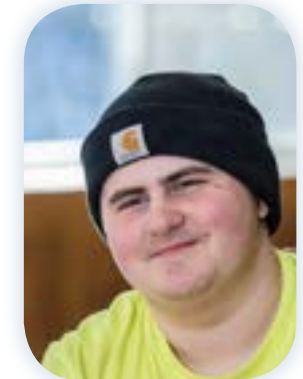


“Out of necessity comes innovation,” shares Woodstock executive director Tony Gronski. “Ellis Tech taught us we can accomplish a lot for the camp while their students continue to learn. It’s a win-win.”



“Students like to show friends and relatives what they’ve accomplished,” says Ellis masonry instructor Elliott Hayden. “We’ve been called back many times, and that’s proof enough of our accomplishments.”

Instructor Hayden is proud of the young women in the masonry program who, though in the minority, make their ingenuity a major factor in the class’s success.



“I enjoyed the teamwork that always led to successful projects,” recalls Ellis graduate Elijah, now an 18-year-old union apprentice. He’s a fan of collaboration, hard work—and a good foundation!





Nick, a 17-year-old masonry student, loves the Woodstock-Ellis partnership. "It's awesome how much there is at this camp," he says, "and it's great to see how much my classmates and I have helped."



## Building Fundamentals

Camp Woodstock found a terrific way to strengthen its structural integrity while at the same time supporting the Y's goal to build valuable partnerships. The camp has a working relationship with Harvard H. Ellis Technical High School in Danielson, CT in which students take what they learn about masonry and, under professional supervision by their instructor, create retaining walls, stairways, patios, and more. While the camp benefits from masonry know-how, the students continue to acquire trade expertise for their future careers.



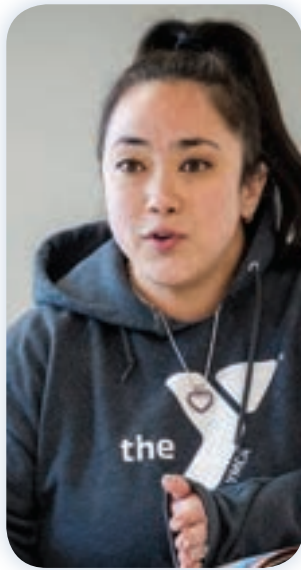
Ellis students, will have "a lot of Woodstock in their portfolios," notes instructor Hayden.

# Building Adaptability

The Wheeler branch in Plainville offers a decisive innovation for adaptive fitness. There are three reasons for that. One, the overall feeling of acceptance and understanding that reverberates off every wall of its gym and activity rooms. Another, the incredible motivation of its members with physical challenges. And the third, its incredible staff, one of whom has firsthand knowledge of such challenges. Wellness Director Paul Weiland, born with cerebral palsy, sums it up well when he says about the Access & Ability program, "There's a paradigm shift taking place here!"

---



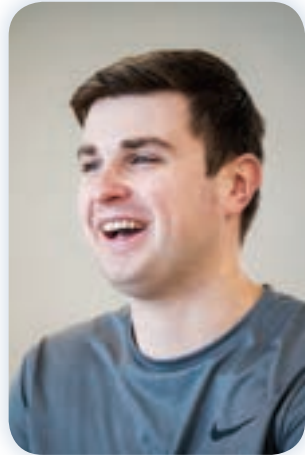


Exercise physiologist Christy Bosley says that one of the most important tools to run Adaptive Fitness is paying attention to what participants say about themselves and the program.

"I truly listen to them and try to relate their comments to whatever challenges I may have of my own," she shares. "Being relatable is a key to our success."



Paul, a licensed adaptive fitness instructor, knows that "knowledge is power," which is why he works hard to share his view that reaching for maximum ability is the highest form of self-respect. "Without this program," he says, "many people would lack the tools they need to become the people they truly are inside."



"This is *the* program," declares Greg without a moment's hesitation when asked about Adaptive Fitness at Wheeler. A busy guy, Greg, who developed a rare spinal cord virus as a child, works in the financial services industry, is planning his wedding, and trains at the Y as often as possible. "It's more than just working out," he says. "It's being entirely functional."



## 2023 Association Highlights

Raised more than \$2.5 million through the Annual Campaign, special events, and donations to support children, families, and adults participating in YMCA programs.

Raised close to \$1.4 million in grant support.

Secured over \$145,000 at the 22<sup>nd</sup> annual Kids to Camp Golf Tournament, presented by Coca-Cola Beverages Northeast, in support of summer camp scholarships.

Raised over \$60,000 during Healthy Kids Day, an association-wide fundraising event in support of the Y's youth programs.

Engaged David Martorano and the Thriving Ys team to analyze GHYMCA operations and assets.

Formed Bylaws and Endowment, Finance, and Strategy (EFS) board task forces.

Adopted a new Strategic Plan; Roles and Responsibilities Matrix; a Statement of Personal and Professional Standards of Conduct for board members, trustees, advisory council members, and senior leadership staff members; and updated and restated bylaws.

Served 324 youth in the BellXcel summer learning program. During the 6-week program youth gained an average of 1.5 months in literacy skills and 2.5 months in math skills.

Celebrated the retirement of Susan Joyse, Chief Development Officer.

Welcomed three new members to the Y leadership family: Jeff Williams, Chief Development Officer; Becca Ginns, Vice President of Development; and Valencia Williams, Vice President of Operations.



## Camp Jewell YMCA

Served 2,061 campers through our overnight and day camp programs.

Served over 8,823 people in year-round programs, including 3,005 students, 76 separate organizations, and 75 families in our family camps.

Celebrated the completion of a new playground, climbing tower, and zip line at Camp Chase through a generous donation from Squadron Capital.

Congratulated Camp Rising Sun, a camp for children who have or had cancer, as they celebrated their camp's 40<sup>th</sup> anniversary.

Hosted summer staff from 23 countries, and campers from 26 states, 105 towns in Connecticut, and 11 countries.

Provided over \$162,000 in financial assistance to over 204 campers during the summer who would not otherwise be able to afford to attend camp.

Grew revenue in excess of \$1.4 million over 2022.

## Camp Woodstock YMCA

Engaged over 1,300 kids in summer camp.

Exceeded the \$1.25 million goal for the 100 Year Promise Capital Campaign.

Surpassed the Annual Campaign goal by raising over \$110,000, which provided financial assistance to 122 children.

Completed two new cabins as part of the 100 Year Promise Capital Campaign.

Partnered with The ARC, a non-profit that promotes and protects the human rights of people with intellectual and developmental disabilities, on a project in which ARC participants baked cookies for campers throughout the summer.

Collaborated with Ellis Technical High School masonry and carpentry departments to build a new archery range, program space, pavilion, and campfire area.

Celebrated Camp Woodstock's 101<sup>st</sup> summer on the shores of Black Pond.

Ended the summer at 93% capacity for summer programming.

Hosted two alumni events, one in the Boston area and one in New York City.

Took part in The Witness Stone Project and placed a Witness Stone at the Enslaved Dam in Woodstock, CT, in tribute to and memory of those who were enslaved in Woodstock.

## Downtown YMCA

Provided free swim lessons to 130 children over the past two years through the Learn to Swim program.

Incorporated swim lessons into the day camp schedule wherein 40 campers learned to swim over the course of the summer. By the end of the summer, 95% were able to swim the length of the pool.



### Farmington Valley YMCA

Hosted free community events including the 1<sup>st</sup> Annual Easter Egg Hunt; Senior Financial Fraud Seminar; Senior Health & Fitness Day Celebration; Community Hikes; Family Night BBQ; Healthy Kids Day; Halloween at the Y; Breakfast with Santa; blood pressure checks in partnership with the Farmington Valley VNA; Middle School Nights Out; and Farmers' Markets.

Offered 11 lifeguard classes hosted by the aquatics team.

Presented water safety seminars at three local schools, where over 600 kids were taught about the importance of safety in and around the water.

Helped 86 members get healthier with the Slimdown challenge.

Supported 54 members who logged a total of 16,780 hours of exercise, burned 5,123,832 calories, and earned 1,245,704 Myzone Exertion Points, all tracked through Myzone fitness bands.



Congratulated the Farmington Valley Tsunami swim team for winning the YMCA New England Championship for the 15 and over age group.

Engaged 393 participants in the 2023 Granby Road Race and 26 participants in the Race 4 Chase.

Enrolled over 115 students in before-school and after-school programs, including expanded sites at Pine Grove and Roaring Brook Schools.

Hosted the annual Mission in Motion Cycle-a-Thon, which raised \$20,000 to provide financial assistance for membership and programs to individuals and families in need.

Partnered with the Department of Children and Family Services to spread holiday cheer to 46 foster children. Members, volunteers, and staff generously donated gifts to make the holidays special for these children.

### East Hartford YMCA

Commemorated the opening of the newly renovated and licensed East Hartford Childcare Center (for children ages 6 weeks to 5 years old), at 770 Main Street, with a ribbon-cutting ceremony in October.

Celebrated the graduation of 23 youth from the YCC and Larson Center pre-school programs.

Applauded 14 LEYH swim team high school seniors as they received scholarships to swim at the collegiate level.

Distributed 20,000 meals to children who participated in summer day camp, childcare, and the BellXcel program.

Provided over \$42,000 in financial assistance to all families whose children were enrolled in childcare programs, which made childcare affordable for working parents.

### Hale YMCA Youth and Family Center

Provided 75 youth with free safety around water lessons during school vacation week in April.

Partnered with the American Red Cross to host blood drives that collected 38 pints of blood.

Provided 156 teens with free summer memberships by way of a \$30,000 grant from the Beagary Trust.

Received two grants to provide the Race 4 Chase youth triathlon training program to 34 children, culminating in a triathlon with over 600 youth athletes from across New England.

Added swim lessons to our day camp program, which allowed 217 campers to learn how to swim.

Raised \$46,000 for wellness programs, including LIVESTRONG® at the Y, at our Road to Wellness cycling, spin, and kids fun-run fundraiser.

### Glastonbury Family and Tri-Town YMCAs

Commemorated the official opening of the new Glastonbury Family YMCA at 90 National Drive, Glastonbury, with a ribbon cutting ceremony in June.

Hosted an inaugural holiday breakfast for early-childhood education participants and families in the community.

Ran three successful sessions of our LIVESTRONG® at the YMCA program, which helps cancer survivors find strength and community.

Partnered with the Hartford Wolf Pack to run floor hockey sessions with team members at Camp Glawackus.

Welcomed Marissa Casarella as our new Executive Director.



### **Indian Valley Family YMCA**

Received \$30,000 from White Mountains Insurance to support the **LIVESTRONG®** at the Y cancer survivor program. Thanks to their generosity, 55 cancer survivors graduated the program in 2023.

Provided a BellXcel summer learning loss prevention program in partnership with the Vernon Public School District. This program served 27 youth entering 5<sup>th</sup> and 6<sup>th</sup> grade.

Served 28,068 meals and provided care for 157 children in our child development programs.

Hosted a blood drive in partnership with the American Red Cross with 28 donors, which supported 54 recipients. Hosted a flu vaccine clinic that provided 80 vaccines. Collected over 15 totes of food and hygiene products for our local food banks.

Engaged 170 children at Camp Indian Valley. Thanks to our generous donors and Care4Kids, 41 children received over \$22,000 in financial assistance.

Hosted the 6<sup>th</sup> annual Spirits for Giving gala, which raised nearly \$24,000 and exceeded the

Annual Campaign goal, with a total of \$89,634.

Applauded the Breakers Swim Team as they enjoyed a '3-peat' in 2023 by winning the YMCA Yankee Cluster League championships for the 3<sup>rd</sup> year in a row in both the spring short course and summer long course.

### **West Hartford YMCA**

Participated in West Hartford town-wide community events including Celebrate West Hartford, Halloween Stroll, and Holiday Stroll.

Received \$10,655 from proceeds raised at the Old Guard Golf Tournament to help support summer camp in West Hartford.

Received a \$10,000 donation from the Vernon D. and Florence E. Roosa Family Fund at the Hartford Foundation for Public Giving. The award provides financial assistance to families for summer camp and youth programs.

Welcomed 110 campers at Camp West Hartford.

Worked with 47 youth to mitigate summer learning loss through the BellXcel program.

### **Wheeler Regional Family YMCA**

Graduated 30 participants from **LIVESTRONG®** at the Y, of which eight formed a Wheeler **LIVESTRONG®** team and participated in Plainville's Relay for Life event to help raise awareness for cancer.

Served 35 participants in the Adaptive Fitness program, which strengthens the lives of people with all abilities.

Engaged 140 children in our preschool program, which prepares children with skills they need for kindergarten.

Hosted 150 youth at Camp Wheeler day camp, where they made new friends, learned new skills, and built self-esteem.

Partnered with the United Way for two of their signature events: Annual Day of Caring, wherein volunteers completed beautification projects at the Y and a back-to-school backpack drive, which completely filled over 20 backpacks for children in the communities we serve.

Welcomed Donelle Daigle as the new Executive Director.

**Wilson-Gray  
YMCA Youth and  
Family Center**

---

Served 30 participants in the Adaptive Fitness program, strengthening the lives of people of all abilities.

---

Worked with 126 youth to mitigate summer learning loss through the BellXcel program.

---

Awarded \$537,000 by the City of Hartford and the State of Connecticut's School Readiness program, funded and administered by the Connecticut Office of Early Childhood, to provide affordable early education full-day, year-round childcare. The Preschool program was launched in November 2023. The Infant and Toddler program is slated to open in spring 2024.

---

Partnered with the American Red Cross and the New England Sickle Cell Institute of UConn Health to host the inaugural Juneteenth Sickle Cell Awareness Blood Drive and Expo. During the event, 56 attendees donated blood.

---

Hosted a Thanksgiving dinner and served meals to more than 75 community members at the annual holiday event.

---

Hosted a free event in partnership with United Against Hate (UAH) designed to inform community members about hate crimes and discuss strategies to respond to them. The event was attended by 85 community members. Opening remarks were provided by US attorney for the District of Connecticut Vanessa Roberts Avery. This initiative is part of Connecticut's FBI Outreach team and the US Attorney's Office (USAO) Multi-Cultural Community Committee (MCCC).

---



**Thomas “Tom” J. Rechen**, this year’s recipient of the Robert C. Knox, Jr. YMCA Distinguished Leadership Award, rarely misses an opportunity to give credit to others for instilling in him the attributes that have helped him reach many personal and professional goals. And that trait in Tom makes him so valuable as a mentor to others who may aspire to the same kind of productive life and career.

When asked to reflect on the principal lessons gained from his early years through family influence and professional mentorship, he did not hesitate for a moment. “There are at least three. To advocate for what I believe in, to be unafraid to speak up, and to try to always be fair, logical and persuasive,” says Tom, whose has held many volunteer positions for the YMCA of Greater Hartford, the latest of which include Vice Chair of the Executive Committee and as an active member of the Nominating and Governance Committees.

Tom is an attorney who specializes in business and intellectual property litigation. From the earliest moments of his career, he recognized the value and personal satisfaction of helping organizations that exist for the public good. In fact, when asked by his first law firm boss to help raise money for the Y, he jumped right in. Looking back today he reflects that “I have always loved the chance to make an impact. Whatever I do for the Y and other organizations, it is always my intention to do it to the best of my ability, with integrity and honesty, and all consistent with values instilled by my family and my faith. That’s the way it’s been from the start.”

In addition to the Y, Tom has worked with the World Affairs Council of Connecticut, the Talcott Mountain Science Center, the Hartford Bishop’s Foundation, and many other local, statewide and regional boards and agencies. Many years ago, when he first started raising funds for the Y, his

affinity for the Greater Hartford group grew quickly thanks to the camaraderie he enjoyed as he continued to meet people and make lifelong friends. But what also sparked his enduring interest was the fact that the Y represents and works on behalf of every walk of life—a reality he found especially rewarding.

That is the simple truth behind Tom’s role as one of the YMCA’s most active and effective volunteers.

How he became a lawyer is a somewhat different story, though with an equal level of simplicity.

“When I was a very young boy, one day my mother noticed rocks on the lawn, and she assumed that I was the one who had thrown them there. Rocks made it hard to mow the lawn and damaged the mower blades,” he recalls. “My mother yelled at me about it. So I asked her, ‘Mom, did you actually see me throw the rocks?’ And that was the day my mother says she knew I would one day be a lawyer.”

He has indeed been a successful one, and he brings to the Y the same level of compassion, integrity, and astute counsel that he brings to the courtroom.

With his ongoing resolve to raise funds, to provide recommendations for projects and programs, and to utilize his organizational and leadership skills, Tom continues to make his friends and colleagues at the Y very proud. Also proud of his many accomplishments are his wife Amy, their grown children, Alexandra, Timothy and Christopher, and his parents, John and Ann.

“I have attended countless annual YMCA meetings and have seen so many people whom I admire receive the R. C. Knox Award. To stand in their company is humbling ... and a tremendous honor.”

It is well deserved. **Congratulations, Tom.**





**THOMAS J. RECHEN** Robert C. Knox, Jr. YMCA Distinguished Leadership Award Recipient

#### Past Knox Award Recipients

- 1977 Robert C. Knox, Jr.\*
- 1978 The Hon. Thomas D. Gill\*
- 1979 Frederick U. Conard, Jr.\*
- 1980 William H. Short\*
- 1981 Richard B. Haskell\*
- 1982 Reese H. Harris, Jr.\*
- 1983 Herbert R. Bland\*
- 1984 Earnest T. Andrews, Jr.\*
- 1985 J. Ronald Regnier\*
- 1986 Donald P. Richter\*
- 1987 William K. Cole\*
- 1988 Morrison H. Beach\*
- 1989 Robert E. Carroll, Jr.\*
- 1990 Raymond W. Stahl\*
- 1991 Warren A. Hunt\*
- 1992 Robertson Mackay\*
- 1993 Donald J. Hayes\*
- 1994 Raymond B. Green\*
- 1995 Alfred R. Rogers
- 1996 Raymond H. Deck\*
- 1997 Harold C. Buckingham, Jr.\*
- 1998 R. Michael Curran
- 1999 Judith A. Stearns\*
- 2000 J. Philip Denison\*
- 2001 Chandler J. Howard
- 2002 Myron E. Congdon
- 2003 Michael M. Hopkins\*
- 2004 Gerald Geise
- 2005 James T. Betts
- 2006 Arthur Snyder
- 2007 Laura Estes
- 2008 William Petitt, Sr.
- 2009 John F. Byrnes
- 2010 Warren C. Packard\*
- 2011 Ruth H. Grobe
- 2012 JoAnn Price
- 2013 Al Wilke
- 2014 I. Charles Mathews
- 2015 Daniel C. Tracy
- 2016 Peter B. Atherton
- 2017 Gary Wolff
- 2018 Jerald (Jerry) Gooden
- 2019 Philip Kane, Jr.
- 2020 Betty Hale
- 2021 Edward F. Bader
- 2022 Richard J. Burness
- \* Deceased



Ruth and Rich Grobe

## Leadership Circle

Our major donors make a large personal investment in the Y's mission-driven programs, services, and projects that deliver positive outcomes and build lifelong success. We are honored to acknowledge their generosity with membership in our Leadership Circle. This special society is reserved for the Y's most generous friends whose annual gifts total \$10,000 or more or have lifetime contributions in excess of \$1 million.

**Ruth and Rich Grobe** have been supporters of the YMCA of Greater Hartford for many years based on their belief that the Y builds stronger communities and helps people of all ages and backgrounds develop strong minds, spirits, and bodies. Rich, a minister who works with youth, says his Y experience has helped him focus on his career. The Grobes have directed their generous support to many branches and programs, and also many camps, which have long played an important role in their family life. Ruth was actively involved in the planning of the Wilson-Gray YMCA branch, which provides countless educational and wellness activities to enrich the lives of families in North Hartford. "When you support the Y," she says, "you get more out of it than you give."

Dr. Linda S. Alexander  
Toten & Nadja Bacardi  
Pat Morgan,  
Beagary Charitable Trust  
William Belcher  
Ed & Mary Budd  
Theodore & Mary\* Gawlicki,  
The Gawlicki Family  
Foundation  
Ruth & Richard Grobe  
Carole Goldberg  
Betty Hale  
Sherry Manetta &  
Brian Harvey  
Kimberly & Michael Hecht  
Sandra Kuhach &  
Peter Axilrod  
JoAnn & James Price  
Elwyn Harp,\*  
Roosa Family Memorial Fund  
at the Hartford Foundation  
for Public Giving  
Arthur Snyder  
David Pelizzon,  
Squadron Capital LLC  
Ryan Wilde, Wilson Wilde  
Family Foundation

## The Heritage Club

The Y's planned giving society, The Heritage Club, honors individuals who have made a planned gift to benefit the Y and its 12 branches and camps. Such gifts follow one's life and might include an estate gift, bequest of life insurance, IRA distributions, charitable gift annuities, charitable remainder unitrusts, or charitable remainder annuity trusts. We are deeply grateful for the generosity of our over 250 Heritage Club members whose planned gifts will allow the Y to serve our communities well into the future.

Douglas Ahrens\*  
 Florence Allen Trust  
 Lewis W. Allen\*  
 Florence Allis\*  
 Harry N. Anderson\*  
 David Anderson\*  
 Anonymous (several)  
 Graham H. Anthony\*  
 Jose Arruda  
 Peter B. Atherton  
 Pauline Baker\*  
 Amy Barnard\*  
 Barney World Service Fund  
 Mervyn Barton\*  
 Jerome Baskin\*  
 Ruth W. and Merton W. Bassett Trust  
 Morrison & Evelyn Beach\*  
 John H. Beardsley\*  
 Eleanor Beardsley\*  
 Allen Beavers, Jr.\*  
 William & Ellen\* Belcher  
 John C. Bennett  
 Alice Bennett\*  
 Paul & Jeri Berkel  
 Amy C. Bernard\*  
 Allyn Bernard\*  
 James T. & Joan Betts  
 Harold Bidwell\*  
 Edwin Bingham\*  
 J. Walton Bissell\*  
 Robert A. Boardman\*  
 David W. & Betts Bradley\*  
 Philip & Dottie Bruex\*  
 Rae H. Brewster\*  
 Gary P. Brinson  
 Burce & Marge Brown  
 Helen Brown\*  
 Nancy Bruce\*  
 Linda P. & Theodore J. Bruttomesso  
 Marion Buchanan\*

Harold C. Buckingham, Jr.\*  
 May Bulakavo  
 Paul R. Burch  
 Richard J. Burness  
 George D. Burnham\*  
 Martin A. Burnham\*  
 Lena A. Burwell\*  
 Anna Butler\*  
 William & Pricilla Butler\*  
 John & Marla Byrnes  
 John Spencer Camp\*  
 Jeanette & Fred Campbell\*  
 Mrs. Austin Carey\*  
 Mike Carlson\*  
 Stuart Bruce Carlson\*  
 Anne & Robert E. Carroll, Jr.\*  
 Rhoda & David\* Chase  
 Mabel H. P. Clard\*  
 Mabel Clark\*  
 Robert Coburn\*  
 Maura & William Cochran  
 Carol Cole\*  
 William K. Cole\*  
 Shawn Collins\*  
 Frederick U. & Annette Conrad\*  
 Myron Congdon  
 John J. Corning\*  
 Jerry Coursey\*  
 Florence S. M. Crofut\*  
 Disney Crofut\*  
 Catherine Crowley  
 Caroline Crowley\*  
 R. Michael & Nancy Curran  
 Minnie Curran\*  
 Fanny P. Curtin\*  
 Anna Curtiss\*  
 The Dandeneau Family  
 Robert Darling\*  
 John Davis\*



Raymond H. & Ronnie Deck\*  
 Charles W. Deeds\*  
 George & Jenny Demars\*  
 J. Philip\* & Marsha Denison  
 Stanley Dimock\*  
 Leslie Dow\*  
 Peter & Deborah Dowling  
 Edward Dunn\*  
 Charles T. Dwight\*  
 Lawrence A. Eddins\*  
 Shayna Ellovich  
 Mrs. Grace Ellsworth\*  
 Lucius Elmer\*  
 Morton A. Elsner\*  
 Annie Elwin\*  
 Robert K. & Mary Elva Erf\*  
 Roy & Risa Filkoff  
 Gustave Fischer\*

Nancy\* & Robert Fitzgerald  
 Donald Flaxman\*  
 George Flynn\*  
 Gary & Meg Forster  
 Arthur W. & Jane Frank\*  
 Abraham Friedman Trust  
 Seldon Geer\*  
 Gerry & LaDona Geise  
 Garles Gersten\*  
 Mark Giddings\*  
 Hon. Thomas Gill\*  
 Bernard Gilman\*  
 Milton Glover\*  
 Charles C. Goding  
 Jerald & Linda Gooden  
 Richard & Karen Goodwin  
 James L. Goodwin\*  
 Loius H. Graham Trust  
 Ellsworth S. Grant\*





Raymond B. & Barbara Green\*

William M. Griffin\*

Betty Hale

Elizabeth Hammond\*

Elywn\* & Elsie Harp

James Harris

Steve Harris

Peter Harris

A. Richard & Joan Harris\*

Capt. Myron A. Harris\*

E.F. Harrison\*

Kim Harty

Anthony Hawes

Bruce P. Hayden\*

Donald J.\* & Eleanor Hayes

Hillyer Institute

H.R. & C.E. Hillyer\*

Idamae Hobbs\*

Robert B. & Nancy Jo Hoffman

Aaron Hollander Fund

Simon Hollander Fund

Michael M. & Marie Hopkins\*

Margaret Humphrey

Warren J.\* & Dollie Hunt

In memory of Everett Geer

Edith L. & Ward Jacobs\*

John Jacobs\*

Stephen Jacoby\*

Wilson C. Jainsen\*

Catherine D. Jervy\*

Charles Jervy Trust\*

S. Edward & Michael Jeter

Bruce & Karen Johnson

Kenneth & Christine Jones

Jeremy S. & Carolyn Jones\*

Wayne Kellner

Calvert & Phyllis Keristead\*

Harold W. Kilbourne\*

George Kimball\*

KK McLane Trust

Louise J. Klett

Archie Knowles\*

Robert C. Knox, Jr.\*

Estelle L. Knox\*

Amy S. Kulle\*

Frank & Ethel Layton\*

Howard W. Leuter\*

Ferne Lienhard\*

Brian P. & Christine Liss

Sidney Locke\*

Barry Loucks\*

Robertson & Jackie Mackay\*

Mr. & Mrs. Walter D. Malins\*

Christine C. & Richard Marcks

Edwin W. Marvin, Jr.\*

Charlotte L. Massie & Bob Pryzvylski

H. Stuart Massie, Jr.\*

Mike McGlamery

Paul McNulty

Helen Mellander\*

Thorston O. Mellander\*

Susan Miller

Jocelyn Mitchell

Marjorie Moore\*

Karl P. Morba\*

James\* & Lois Nassau

Alan Nathan

Robert L. & Jo-Anne Neal\*

Robert & Mim Nichols\*

Warren C.\* & Florence Packard

Arabella Paine\*

John Papenhausen\*

William Parkman

Duane & Ruth Perry\*

Judson T. & Virginia C. Pierson Trust

Everett Piester\*

Jane Price

J. Ronald Regnier\*

Charles Reid\*

Charles Reid, II\*

Gertrude B. Reitemeyer\*

John Reitemeyer\*

Frank J. Reynolds Trust

Henry J. B. Rice\*

Donald P. & Jane Richter\*

Helen Roberts\*

Henry Roberts\*

Lissa Robinovitz

Antonio Rodriguez

Lewis P. Roraback Trust

Etta M. Rose\*

Rebecca C. Rose\*

Samuel Roskin Trust

Etta Rowe\*

William C. Russell Trust

Peter & Betsy Russell\*

Nancy Ryszkiewicz

Robert Savard, Jr.

Dr. James & Kathleen Sayre

Frances Schiede\*

Douglas Scott\*

Christopher C. Scranton

J. Hamilton Scranton\*

Michael & Susan Sherman

Fred Sloane\*

Arthur M. & Judy\* Snyder

Edward Snyder\*

Elizabeth Speer\*

Joseph Stackpole Trust

Raymond W. Stahl\*

Judith A. & John Stearns\*

Nathaniel T. Stevenson Memorial Fund

Holly W. Stevenson\*

Georgre Stewart\*

Marvin Stocking\*

Samuel M. Stone\*

Donald & Janet Thatcher

The Clark Fund

The Gale Fund

The Geer Fund

The Jacobs Fund

The Mayflower Fund

The Porter Fund

Elmier Thienes\*

Orwell & Zama Tousley\*

Leonard M. Troub\*

Leigh VanEtten

Dennis Joe Voss\*

Ray & Sheryl Weaver

Thomas C. Weaver, Jr. Campership Fund

James B. Webber, III

Wells Fargo Corporate Trust Services

Richard Wenner

Frank & Bertha Wheeler\*

Joseph A. & Maureen White

Dr. David & Margaret Wilcox

Alfred & Helen Wilke

Jennie L. Williams\*

Ernest Williams\*

Fred Wirth\*

Charles W. Woerz\*

Bette & Thomas J.\* Wolff

Gary & Eileen Wolff

Charles Guilford Woodward\*

William & Edith Woolley\*

Jane & Harold B. Wright, Jr.\*

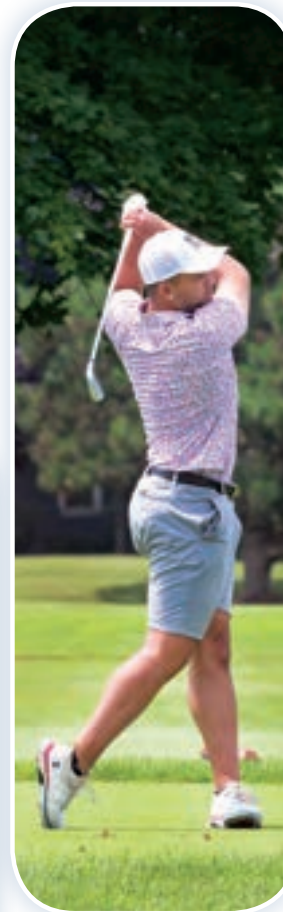
Mary Ellen Yankov Memorial Trust

E. Robert & June Zenke\*

Charles Zimmerman\*

James Zocco\*

\*Deceased



## Kids to Camp Golf Tournament

Raised over \$145,000

The Kids to Camp golf tournament supports the Y's ability to ensure that every child has the opportunity to attend summer camp regardless of financial circumstances. A Y camp experience is often life-changing and allows youth to explore the outdoors, be active, make new friends, build confidence, and develop leadership skills.

Presenting Sponsor:



Signature Sponsor:



Corporate Executive Sponsors



Golf Ball Sponsor  
Webster Bank

Golf Cart Sponsor  
Tito's Handmade Vodka

Golfer Gift Sponsor  
Access Health CT

Eagle Sponsors  
Bartlett Brainard Eacott Inc.  
Hartford Yard Goats  
McCarter & English, LLP  
Precor  
Quisenberry Arcari Malik Architects  
/ BVH Integrated Services  
Sifco, Inc., Saydoff  
Interiors & Finishes Co.  
TD Bank  
The Hartford



## Healthy Kids Day

Raised over \$60,000

Healthy Kids Day provides an opportunity for children and families to come together at the Y to experience a free, fun-filled, family-centered day dedicated to youth. The goal of Healthy Kids Day is to inspire youth and families to make health, wellness, and safety a priority in their lives.

Gold Sponsors:



Silver Sponsor:

The Hartford

Bronze Sponsor:

Pratt & Whitney  
Hartford Healthcare

Corporate Executive Sponsors:



The YMCA of Greater Hartford thanks its generous donors who supported the Y's Annual Campaign, branch special events, endowment, and mission-based programs and services in 2023.

The YMCA 1852 Society consists of special friends of the YMCA who supported it with a gift of \$2,500 or more. The YMCA 1852 Society derives its name from the year of the birth of the YMCA services in Hartford. The YMCA of Greater Hartford is the fourth oldest YMCA in the United States. The generous gifts from members of the 1852 Society allow the YMCA to continue its important work throughout our region.

**1852 Society DIAMOND  
(\$25,000 & above)**

Amazon  
Beagary Charitable Trust  
Best Buy Foundation  
John J. Corning Trust  
Connecticut State  
Department of Education  
Gawlicki Family Foundation  
Betty Hale  
Hartford Foundation  
for Public Giving  
LEGO Community Fund u.s.  
Liberty Bank &  
Liberty Bank Foundation  
SBM Charitable  
Foundation, Inc.  
Norma & Natale Sestero  
Fund at the Hartford  
Foundation for Public Giving  
Squadron Capital LLC  
State of Connecticut  
Department of Economic  
and Community  
Development  
The Children's Museum  
The Hartford  
Travelers  
White Mountains  
Insurance Group  
YMCA of the USA

**1852 Society PLATINUM  
(\$10,000 to \$24,999)**

Dr. Linda Alexander  
Asylum Hill  
Congregational Church  
Toten & Nadja Bacardi  
Budd Family Fund at the  
Hartford Foundation for  
Public Giving  
Anna Butler Trust  
Coca-Cola  
Beverages Northeast  
Elizabeth M. Landon &  
Harriette M. Landon  
Charitable Foundation  
Fairview Capital Partners  
Granby Community Fund Inc.  
Newell & Betty Hale Fund  
at the Greater Worcester  
Community Foundation  
Ruth & Richard Grobe  
Kimberly & Michael Hecht  
Katherine McLane & Henry  
McLane Charitable Trust  
Sandra Kuhach &  
Peter Axilrod  
Sherry Manetta &  
Brian Harvey  
NewAlliance Foundation  
Roosa Family Memorial  
Fund at the Hartford  
Foundation for Public Giving  
Arthur Snyder  
Sodexo, INC & Affiliates  
VOYA Financial  
Wilson Wilde  
Family Foundation

**1852 Society GOLD  
(\$5,000 to \$9,999)**

Access Health CT  
Aetna  
Andrulat Charitable  
Foundation  
George A. & Grace L.  
Long Foundation, Bank of  
America, N.A., Co-Trustee  
Edwin H. Bingham Trust  
Sunil Savkar &  
Stefanie Birkmann  
BlackRock  
Burkentine Builders  
Camp Rising Sun  
Comcast  
Marcy Dandurand  
Stephen & Ellen Delpapa  
Susan Devokaitis

John Hart  
Hartford Healthcare  
Lloyd Huie  
John Keleher  
Paul Kelly  
Kimball & Watkins-  
William Raveis  
Kevin Lewis  
James Martin  
Annie & Dave Moore  
Newell D. Hale Foundation  
Carolyn Paldino  
Mark & Jennifer Plourde  
Putnam Area Foundation  
Raytheon Technologies  
The Chase Kowalski  
Scholarship Fund  
The Mathieu L. D'Amour  
Family Fund  
The New York Community  
Trust, Stuart Cornfeld Fund  
Jean Schiro-Zavela Fund  
at the Hartford Foundation  
for Public Giving  
Titan Energy  
New England, Inc.  
Tito's Vodka  
Mary-Jo &  
Greg Toczydlowski  
UnitedHealth Group  
Demetri Vourliotis  
Webster Bank  
Weiss, Hale & Zahansky  
Strategic Wealth Advisors  
William & Ellen  
Macristy Foundation  
WIN Waste Innovations

**1852 Society SILVER  
(\$2,500 to \$4,999)**

Alexander and Catherine  
Maus Wright Charitable  
Foundation  
Arthur J. Gallagher & Co.  
Associated Security  
Corporation  
AssuredPartners  
Andrew Bachman  
Bartlett Brainard Eacott Inc.  
Elisa Bartlett  
Diane Belcher  
Berkshire Bank Foundation  
Patricia Brewer  
Sara Buell  
Richard Burness  
John Byrnes

Centreville Savings Bank  
Tracy & Edward Church  
Command Corp  
CWPM  
Day Kimball Healthcare, Inc  
Eastern Connecticut Health  
Network (ECHN)  
Jenny Emery  
Jason Fazio  
Fiducient Advisors  
Goodwin University Inc.  
Harness Way  
Hartford Yard Goats  
Bryan Hitchcock  
Dylan Jacobs &  
Mikayla Wilson  
Jewett City Savings Bank  
Foundation Inc.  
Max Cares Foundation, Inc.  
McCarter & English, LLC  
Nasimith Memorial  
Basketball Hall of Fame  
Timothy McGrath  
Marisa McMahon  
Jocelyn Mitchell  
Monaco Ford  
The Old Guard  
Norma-Jean Posocco  
Precor Incorporated  
Thomas Rechen  
Jack & Susan Ross  
East Hartford Rotary Club  
Judy Rzucidlo  
Eric & Kristin Santini  
Richard Shima  
Sifco, Inc.  
Harold Sparrow  
Joseph S. Stackpole  
Charitable Trust, Bank of  
America, N.A., Trustee  
Robert Stearns  
Streamline Aquatics  
Kevin Tabellione  
Kathleen Taylor  
TD Bank  
The Raney Family Fund  
Trinity Health Plan of  
New England/Medigold  
United Way of Central &  
Northeastern Connecticut  
USA Waste & Recycling Inc  
ValMark Global Gift Fund  
Virginia J. Taft  
Charitable Fund  
Vistra Energy

Westfield Bank  
Dr. David & Margaret  
Wilcox  
Gary & Eileen Wolff

**CHAIRMAN'S CIRCLE  
(\$1,000 to \$2,499)**

Merlin Alper  
Peter Anderson  
Peter Atherton  
Heidi & Robert Bailey  
Baker's Dozen of Brooklyn  
Steven & Beth Ballentine  
Meredith Bartholomay  
Stanley & Judith Battle  
Christopher Becke  
Paul Berkel  
Thomas Borner  
Paul Bosley  
Eric Brown  
Theodore Bruttomesso  
BVH Integrated Services  
Camilliere & Cloud  
Jeff Caplow  
Daniel Cargill  
Mr. John L. Carty  
Vince & Cindy Castagno  
CBRE  
Susan Chatfield  
Sarah Chow  
CMRK, Inc  
Code Ninjas  
Coldwell Banker  
Kim Cole  
Community Foundation of  
Western Massachusettes  
Community Renewal  
Team, Inc.  
Congregational Church of  
South Glastonbury  
Connecticut Periodontal &  
Implant Associates  
David Corricelli  
Rodger Coyne  
Connecticut Automotive  
Retailers Association  
CT Realty Trust  
Dalene Hardwood  
Flooring Co., Inc.  
Garfield Danenhower  
Davis Warner  
Philanthropy Fund  
Craig Dawson  
Jocelyn Denalsky  
Peter Dowling

Kwaku Driskell  
Karen Dwyer  
Rebecca Earl  
Quentin & Barbara Eastman  
Bernadeta Eichner  
Doug Eldridge  
Jane Emerson  
George & Laura Estes  
Russell Everett  
Risa & Roy Filkoff  
Alex Fishman  
Laura Floyd  
Gary & Meg Forster  
Four Dads Pub  
Robert & Christine Frederick  
Gina Gaipa  
Matthew Gedansky  
Michael Gerrity  
Jerald & Linda Gooden  
Jodi Gove  
Carey Greene  
Griffin Electrical Contractors  
Josslyn Grindle  
Anthony Gronski  
Joli Gross  
Robert Gruber  
Derek Gyllenhammer  
Kathryn & Erik Hanson  
Renny Hanson  
Hewlett Packard Enterprise Foundation  
Linette & Aristede Hill  
Robert & Nancy Jo Hoffman  
Suzanne Hopgood  
Garrison Hudkins  
Chris & Tanya Hug  
Jeff Hyde  
Gary & Elizabeth Jachym  
S. Edward Jeter  
JF IV HOLDINGS COMPANY, LLC  
Bruce & Karen Johnson  
Ronald Johnson  
Susan & Mark Joyce  
Philip Kane Jr.  
Kelly Lynch & Gary Kanter  
Devesh Karandikar  
Wayne Kellner  
Joseph Kelly  
Francis Kelly  
Lawrence & Carla Kiel  
Kilwins West Hartford

Linda Knox  
David Lajoie  
Annette Larabee  
Greg Latz  
Diane Lecuyer Zalewski  
Frank Leone  
Levit & Fixt  
Coleman Levy  
Liberty Mutual  
Lincoln Financial Foundation, Inc.  
Brian Liss  
Live Every Day Physical Therapy  
Christine & Carter Lonsberry  
Melissa Machado  
Kurt Malec  
Matt McCormack  
Richard McGearry  
Michael McGlamery  
Warren McGrath  
Cynthia McNamar  
McNeely Foundation inc.  
Meadowbrook of Granby  
John & Nancy Melly  
James Michel  
Anindita Mohanty  
Joseph & Chrissy Monaco DiMauro  
Tom Mongellow  
Morgan Stanley Foundation  
Pam Moriarty  
Murphy, Laudati, Kiel & Rattigan, LLC  
New York Life  
Northwest Community Bank-Collinsville Bank  
Peter Olson  
William Parkman  
Paul Family Charitable Fund  
William Peterson  
Anne Pickart  
Pinnacle Maintenance, LLC  
Laura Prisco  
Putnam Rotary Club  
Quisenberry Arcari Malik Architects  
Rawson Materials  
RBC Wealth Management  
Riverside Health & Rehabilitation  
Robinson+Cole  
Rotary Club of Simsbury  
David Schupp

Kurt Schweighoffer  
Selective Development  
Michael & Susan Sherman  
Nelson & Helen Sly  
Philip Smith  
Rick Soto  
Ted & Nora Steinhauser  
Joel & Amy Steinman  
Margaret Strange  
The Hilb Group Operating Company LLC  
The Robin and Bill Grace Charitable Family Fund  
Mark & Debby Teed  
Katie Thibault  
Ann & John Thomas  
Togetherwork Holdings LLC  
Daniel Tracy  
Thomas & Diane Trueb  
Unitarian Society of Hartford  
US Bank  
Susan & William Walton  
Joseph Weiner  
David Westcott  
White Sands Tanning  
Lee Whitford Jr.  
Alfred & Helen Wilke  
William Wolfe  
David Wright  
James Zahansky  
David & Sabine Zell  
Scott Zuffelato

**PRESIDENT'S CLUB  
(\$500 to \$999)**

Irma Allegretti  
Jerome & Robyn Alper  
Marc Altmeier  
Amica Companies Foundation  
Antonucci Electric  
Julianne Avallone  
Edward Abarer  
Barron, Yanaros & Caruso, PC  
Chelsea Baum  
Ruth Bernadt  
Barrett Gray  
Boccaccio Family Trust  
Bosco's Garden Center, LLC  
Alexandra Brez  
Kathleen Bryson  
Alan Budkofsky  
Caty Burgess  
Maureen Buyak

Harry Carrel  
Cindy Caskey  
Kathleen Cattanach  
Cigna  
Eric & Heidi Clapprood  
Alexandra Clermont  
Ronald Coderre  
Elizabeth Cogan  
Horace & Sonya Cole  
Eric Coleman  
Connecticut Children's Medical Center  
Connecticut Physical Therapy Specialists LLC  
Jennifer Daly  
Matt D'Amour  
Richard Darrow  
David Cooke Plaster Co., LLC.  
Rob Dietrich  
Matthew Doak  
Jan Dorenbosch  
Chris Dowd  
Duncaster  
Eagle Rivet Roof Service Corporation  
East Granby Motors  
East Hartford Lions Foundation, INC  
Elizabeth Harding Norton Trust  
Richard Emmings  
Robb Engel  
Leyna Erickson  
Evans Automotive  
Ronald Felix  
Fidelity Charitable Gift Fund  
David Richman  
Sandra Fischer  
Foster Corporation  
Catherine Franks  
David French  
Robert & Susan Glasspiegel  
Jennifer Glick  
Keith Gnazzo  
Granby Chapter of UNICO  
Gail Gretzmacher  
Keith Grimes  
Paul Grimmeisen  
Michael Gustafson  
H & H Media Group, LLC  
Laurence Hale  
Cora Hall  
Timcia Hall  
Hanover Insurance Group Foundation

Kathleen Heneghan  
Robert Herr  
Justin Hicks  
Darrell Hill  
Jocelyn Hillard  
Sarah Karstaedt  
John Hoyt  
Shiji Isaac  
Paul Bordeaux  
Jim Johnson  
JP Carol Construction INC  
Keith Gauvin Roofing LLC  
Phyllis King  
Daniel LeBlanc  
Heather & Jeff LeBlanc  
Macri Associates, Inc.  
Matthew Massaro  
Michael McGuinness  
Charles McLaughlin  
Paul Mikkelson  
Michael Morande  
Lucille Mulroy  
Kristin Naismith  
Michelle Napoli  
Nassau Financial Group  
New England Rocket Development LLC  
Maureen Nicholson  
Stephen Nightingale  
Dustin Nord  
North End Property Management Group & Jordan Group Promos  
Thomas Owens  
Pabich Family Fund  
Mark Pacheco  
Ava Paterwic  
Martin Payton III  
Stephen Phillips  
Angela Phillips-Arrington  
David Picard  
Paul Pinette  
Lisa Piquette  
Betsey Pitt  
Ted Pizzo  
Dana Points & Mark Satlof  
Principal Financial Group Foundation  
Pue, Chick, Leibowitz & Blezard, LLC  
Putnam Business Association  
Kwesi Quaye  
Caroline Rachfalski  
Randich Family

Kathie Reese  
Anne Resnik  
Timothy John Restall Jr.  
Deidra Riggs  
John Ritter  
Marder Robertson & DeFelice Law Office, LLC  
Charles Roberts  
Ariel Robinson  
Rogin Nassau LLC  
Norman Ross  
Craig Rubino  
Jan & Tom Ruderman  
Nancy & Edward Ryszkiewicz  
William Saunders  
Robert Sawicki  
Sharon Schmidt  
Naxhije Selimaj  
Doug Semenuk  
Stacia Shaw  
William & Dawn Sherriff  
Alejandro Sierra  
Anna Smith  
Jeffrey Spadaccini  
Stafford Mechanical Services, Inc.  
Stanley Wiesen, Inc./ SWI Glass & Metal  
Starling Physicians  
State Line Propane, LLC  
David Stavens  
Harold Sterrett  
Joan Summers  
Superior Maintenance Corporation  
Rachel Syme  
Traci Tefft  
Brian Tevnan  
The Center for Bone & Joint Care  
The Rooney Swanson Group (Morgan Stanley)  
Three-Way Communications, Inc  
Trinity Health of New England  
Alicia Unger  
Dr. Michael Ungerleider  
Craig Voorhees  
Katherine Wagar  
Craig Weinstein



David Westerman  
Jeff & Tara Williams  
Windsor Federal Savings  
Bette Wolff  
Scott Woodaman  
Woodstock Building  
Associates  
Craig Wright  
John Wright  
Natalie Zembrzuski  
Zen Restaurant Group  
Craig & Barbara  
Zimmerman

**PATRON OF YOUTH  
(\$250 to \$499)**

Jonathan Abels  
Robert Adams-Michaud  
Aercon Corporation  
James Allen  
American Specialty  
Health Fitness, Inc.  
Jane Anderson Price  
Mike Antonucci  
Arch Insurance Group  
Archambault Insurance  
Associates  
Arnold & Mary Carlson Fund  
Arrow Concrete Products, Inc.  
Bank of America  
Andy Bauer  
Charles Bellingrath  
Daryl DeMarco  
Lindy Bigliuzzi  
Anne Bisenius  
Don Bisplinghoff  
Tracey Bissell  
Jaime Boisvert  
Bousquet Appliance  
Chris Braccia  
John Bradley  
Jeremy Breen  
Jessica Dowdell Brown  
Marc Brunetti  
Vicky Bullock  
Jessica Burke  
Erik Burmeister  
Richard Cabrey  
Cahill's Motorcars, Inc  
Susan Calaman  
Julie & Brian Canterbury  
Abby Carboneau  
Joseph Carlson  
Randa Carr

Lois Cartier  
Marissa Casarella  
Judy Miller  
Elzbeita Cieslik  
Robert Cleary  
Miles Cochran, Jr.  
Francine Coleman  
CT Custom Aquatics  
Connecticut State Chess  
Association Inc  
Thomas Connolly  
Costas Constantine  
Meghan Cooke  
Jennifer Cooper  
David Cormier  
Linda Coveney  
Carolyn Coverdale  
Bill Cutler  
Donelle Daigle  
Daswani Clothiers, LLC  
Liz Dearden  
Randy Defilippis  
Martha Delaney  
Dental Associates  
Sara DiIorio  
Janet Discepolo  
Eagle Fence & Guardrail  
John Earnhardt  
Eastford Building Supply  
William Eicholzer  
Gary Ellrod  
Todd Emery  
Empower Retirement LLC  
ERW, Inc.  
Pam Eudowe  
Ericka Fangiullo  
Christopher Ferace  
Finex Credit Union  
Erin Fisk  
Amelia & Dennis Flaherty  
Bryan Forst  
Ned Furtney  
Frances Gallagher  
John Gambarotta  
Joseph Geiger  
Geissler's Supermarket  
Susan Gray  
Erica & Joel Green  
John Green  
Andrea Grossman  
Ed Gualtieri  
Sean Hadden  
Donna Hatch

Anthony Hawes  
Paula Healey  
Lara Helwig  
Dr. Bonnie Hennig-Trestman  
Shamain Hilliard  
Samantha Hojnowski  
Melinda Holloway  
Kevin Hughes  
Marcie Imberman  
Industrial Aircraft Lodge  
Jaconetta, Burnham and  
Wimer, LLC  
Kathryn James-Stebbins  
Ivo Jaquez  
Joseph Botta M.D. &  
Associates, LLC  
Arjun Jothikrishnan  
Tom Karpeichik  
Susan Katz  
William Kennedy  
Shane Kiely  
Timothy Kiessling  
Andrea King  
Helen King  
Mary Konow  
Lee Kuckro  
Joshua LaChapelle  
Claire & Vincent LaMonica  
Linda Lasko  
Ellen Lawrence  
Amelia Leib  
Debra & Tim Lenihan  
Thomas Lincoln  
Aurélie Linet  
Eileen Liss  
Suzanne Liss  
Tracie Lombardy  
James and Gayle Looby  
Jennifer Looney  
John Luginbuhl  
Kelly Lyman  
Jeffrey Mahler  
Frank Manna  
Stephen Manning  
Elaine Marino  
Cristina Marsh  
McCabe & Associates  
Sean & Erin McCarthy  
Laura McGann  
Sharon McKinstry  
Michael McPadden  
David McQuade  
Nick Merritt  
Edward Michaud



Ken Michonski  
Mike's Barber Shop  
Debra Miller  
Scott Miller  
Nikki Moore  
Pablo Moreno  
Jennifer Motta  
Lindsay Mullen  
Robert Mundy  
Bill Murphy  
Lauri Newell  
Annalise Nielson  
Garrison & Ellen Nord  
Jennifer Norman  
Cynthia Nowlan  
Olivia Herman  
Emily O'Beirne  
Edmund Olson  
Omar Coffee Company  
O'Meara Real Estate Group  
Orleans & Liefland  
Charitable Giving Trust  
Jaclyn Orlowski  
Dan Pardo

Lisa Paterson  
Nora Pencola  
Sean Peoples  
Cheryl Perkins  
Todd Peters  
Positive Battery Company, LLC  
Megan Postal  
Melissa Potter  
Putnam Police Department  
Crime Prevention Fund  
Michelle Rawcliffe  
Kevin Regan  
Reynolds Strategy Group, LLC  
Hannah Richardson  
Lanasha Robinson  
Kenneth Rohde  
Kelly Rome  
Earl Rosebrooks  
Route 10 Tire  
Chris Rovaldi  
Paul Rovelli  
Bernice Roy  
Michelle Ryan  
Susan Sack  
Mimi Satter  
Paul Schneider  
Eric Schulman  
Patrick & Elke Sgarlata  
Scott Siegel  
Amrit Singh  
James Snyder  
Soccer & Beyond  
Richard Solomon  
Edmund Steinnagel  
Kaeley Steinnagel  
David & Cynthia Sullivan  
Gerald Sullivan  
Sunnstone Construction  
Services LLC  
Bob Swanson  
Charlene Swanson  
Gillian Szlachetka Dubay  
Virginia Taft  
Patricia Taylor  
Coreen Thompson  
Sarah & Spencer Thrall  
Dominic Toce  
Tina Topor  
TSUI & TSE, LLC  
Union Baptist Church  
United Way of  
Massachusetts Bay &  
Merrimack Valley  
Christopher Van Nostrand  
Brian Phan Vo

Walsh Woodard LLC  
Grace Walton  
Andrea Wasley  
Gina Watson  
James Weiss  
Emily Welch  
Sarah Whelan  
Nicholas Whipple  
Susan Wilde  
Valencia Williams  
Wendy Garosshen  
Stewart Wolff  
YHB Investment Advisors  
Zachs Family Foundation

**CENTURY CLUB  
(\$100 to \$249)**

914 Main Street LLC  
Karima Abdul-Salaam  
Bryan Adams  
Eric Adler  
Rafiq Al-Fareed  
Zach Alper  
AMC Rugs LLC  
Glenn Ames  
Carolyn Anderson  
Steve Andrea  
Dr. Lawrence J. Andrus  
Samantha Angelini  
Sage Angeloni  
John Apelgren  
Tom Arcari  
Margaret Arnold  
Stephen Aronson  
Cat Arsenault  
Angela Atwater  
Arthur and Mary Aubin  
Karen Austin  
Denise Avicolli  
Nick Avise  
Jeanne Barber  
Frank Barrett  
Hope Barton  
Jeremy Barton  
Rebecca Barton  
Anita Battle  
Jayne Battye  
Denise Baum  
Jennifer Beams  
Jane Beaudoin

Joanne Beers  
Ronald Beliveau  
Greg Bellanceau  
John Bennett  
Sarah Bentley  
Barbara Berger, M.D.  
Buzz & Linda Berger  
Melody Santiago  
Timothy Bethea  
Big Y Foods, Inc.  
Tony Bivona  
Barbara Bizier  
Jo-Ann Black  
Romeo Blackmar  
Marie Blain  
William Blair  
Russell Blatt  
Seymour Bloom  
Michael Bocchini  
Katie Bogus  
Edward Boiczuk  
Stanley Bojanowski  
Albert Bolduc  
Ron Bomengen  
Craig Bond  
Lindsay Boon-Bordenave  
Booz Allen  
Amber Borst  
Christina Bourquin  
Kay Bousquet  
Deborah Bouvier  
Susan Boyan  
Bruce Bradshaw  
William Bray  
Jim Brennan  
David Brounley  
David Brower  
Marge Brown  
Christopher Buell  
Vincent Bullock  
David Buono  
Kenneth Burns  
Karen Bushong  
Peg C.  
Eric Caines  
Jeanne Caldwell  
David Call  
Callahan Bowling Inc  
Dawn Calouro  
Anthony Camilliere  
Mike Campanelli  
Robert Campbell Jr  
Debra Campbell

Richard Campbell  
Paul Cappadona  
Trevor Cardinal  
Kristin Carl  
Nina Carley  
Joseph Carlone  
Mike Carrier  
Gary Carter  
Leon Carter  
Linda & Doug Casey  
Glenn Cassis Sr.  
Ben Castonguay  
Deborah Catalano  
Cheryl Chacho  
Miriam Chirico  
Sungae & Wonsuk Choi  
Krista Clark  
Philip Clark  
Susan Clark  
Christopher Cloud  
Tom Cody  
Carole Cohen  
Sarah Cohen-Pratt  
Colebrook Lion's Club  
Larry Conelli  
Philip Connors  
Corner Pug  
Mavourneen Costello  
Amanda Cote  
Robert Cox  
Jan Coyle  
Elizabeth Cracco  
Nancy Cretaro  
H. David Crombie MD  
Candace Cunningham  
Neal Cunningham  
Ronald & Lorraine Daigle  
Karen Dallaire  
Joseph D'Ambrosio  
Antonio Daniele  
Scott, Jen, Adam, &  
Aiden Danis  
Michael Dannehy  
Nathan Deangelis  
Joan Dearborn  
Peter Deary  
Marita Decozio-Wiley  
William Degan  
Susan DeMaio  
Carla Demers  
Karan Desai  
Matthew Desaulnier  
Paula Diener

Mark Dugalbo  
Gary Dinda  
Sarah Dinda  
Mark Dixon  
Steve Dodge  
Deanna Doerr  
Hank Dominioni  
Susan Doran  
Carmela Doucette  
Seth Driggin  
Donna Dubaldo  
Cynthia Dudjoc  
Gaelle Dudley  
David Duncan  
Michael Dupont  
Wayne Durst  
Jessica, Madison & E  
Ila Dzielak  
East Hartford Women's Club  
Dan Eckstrom  
Tara Ellef  
Russ Ellington  
Bruce Elowsky  
Susan Emond  
Doreen Endress  
Michael Enright  
John Eum  
Chris Evans  
Laura Faga  
Deanne Fagan  
Heidi Famiglietti  
Jennifer Farina  
George Farrell  
Terina Fay  
Phil Ferrari  
Lila Figueroa  
Andrew Filkoff  
Agnes Finigan  
First Congregational  
Church of East Hartford  
Michael Fitch  
Gavin Fitch  
Jessica Fitch  
Ryder Fitch  
Irene Flahive  
Cassidy Flanagan  
Matt Fleury  
John Folsom  
David Fox  
Michael and Marlene  
Frechette  
Pio Froschio  
Thomas & Mary Fuller  
Barbara Funk

Sal Fuoti  
Nancy & Roger Gale  
Shelly Garow-Pampreen  
Craig Gates  
Brian Gauthier  
Nichole Gauthier  
Gen  
Michael Genovesi, MD  
Debbie Gezon  
Amy Gibbs  
Heather Gillette  
Gilman & Valade Funeral &  
Cremation Services  
David, Amelia & William  
Ginsberg  
Sean Glasgow  
Glastonbury Oil Company  
Maria Glidden  
Dan Glissman  
Aleksander Glybin  
Rebecca Gneda  
Desiree Graff  
Luis Gonzalez  
Diana Goode  
Doreen Goodrum  
Sarah Gorgone  
Andrew Granger  
Ines Granville  
Sean Griffin  
Kenneth Griffin  
Paul Gronski  
John Guedes  
Philip Gustafson  
Jan Gyurko  
David & Lois Hager  
Charles Halapin  
Jo Hannafin  
Madeline Harris  
Carolyn Hart  
Hartford Dental Associates  
Marsha Hartlieb  
Thomas Hawrylik  
Haley Henneberry  
Elaine Henry  
Margaret & AJ Hern  
Kristy Hernandez  
Colleen Hilliard  
Shannon Hoar  
Renata Hoddinott  
Sarah Hodkinson  
Jason Hoepfner  
Allen Hoffman  
Joanne Holcombe

Leslie Holland  
Marjorie Holzer  
Edward Homonoff  
Michael Hopkins\*  
Amy Horn  
Susan Okie  
Michelle Horvath  
Gregg Houck  
Flora Houle  
McKenzie Hudson  
Gina Ilardi  
Image Ink Inc  
ITW Foundation  
Gary Jachym  
Katy Jenkins  
Debra Jezierski  
Paul Johnson  
Susan Johnson  
Andrew Johnston  
Dean Jones  
Irene, Zak & Xavier Kahn  
Anzhelika Kardon  
Howard Katz  
Laurie Kaufman  
Susan & Daniel Keating  
Louis Keen  
Matthew Kehl  
Richard Kehoe  
Marie Keiper  
Neil Kelsey  
Kevin Kennedy  
Shannon Kent  
Deborah Kettlety  
Heath Kidd  
Danielle King-Watkins,  
McKenzie Watkins &  
Brendan King  
Karen Kirchner  
Mark Kirschner  
Janice Klein  
Josefa Klein  
Erin Kleinman  
Judy Klemm  
Kloter Farms Inc.  
Bruce Kloter  
William Knose  
Chaz Koch  
Perry Koste  
Andrew Kramer  
Michael Krawczyk  
Thomas Krouskoff  
Thomas Kruzich  
Sarah Kryzak

Joan Kuhnly  
Andres Kukk  
Edwin Ladd  
Barbara Laliberte  
Celeste Lamar  
Dawn Laporte  
Tim Larson  
Dina Lasso  
David Latham  
Patty Lathrop  
Abigail Lawes  
Kimberly Lawrence  
Isaac Lawson  
Benjamin LeBlanc  
France Lee  
Dennis LeFebvre  
David Lefkowitz  
Angie Leka  
Linda Lemmon  
Elizabeth Leong  
Lessard Lanes  
Soloman Lewis  
Stephen Lewis  
Lifetouch School Studios  
Samantha Linner  
Barbara Lipski  
Jacob Litke  
Michelle Litsky  
Littler Mendelson  
Foundation  
Ronald Locandro  
Eileen Longhi  
William Longo  
Susan Looney  
Marie Looney  
Ann Lopes  
Edward Lord III  
Ronald Lowe  
Donald & Linda Lucas  
Garrett Ludwig  
Phillip Luginbuhl  
Virginia Lusa  
Deborah Lynch  
Jana MacDonald  
Marcella Macdonald  
Sean MacDonald  
Cynthia Mackay  
John Macphee  
Richard & Caroline Madore  
Sibongile Magubane  
Cathy & Julia Maher  
Michael Mailhot  
William Malec



Neil Malkin  
 Anne Malone  
 Patricia Manion  
 Bill & Mary Manning  
 Dean Marchessault  
 Jessica Marciante  
 Jean Mari  
 Cathryn Markley  
 Sadie Martinez-Clavijo  
 Kimberly Martini-Carvell  
 Michael Mastromonaco  
 Matthew D. Scoll  
 Giving Fund  
 Michelle Matthews  
 Glenn Mauldin  
 Clea McClellan  
 James Mcconnell  
 Kristen McEachern  
 Robert Mcgrath  
 Dr. Paul McKenna  
 Ashley McLaughlin  
 Brian McNicholas  
 Patricia McVane  
 Loel Meckel  
 Tony Mein  
 Liz & Robert Melvin  
 Marc Meunier  
 Harry Meyer  
 Nancy & Melissa Meyer

Melissa Meyers  
 Rob Michanczyk  
 Gail Millerick  
 Diane Milne  
 Claire Minio  
 Joseph Miragliuolo  
 Joey Lee Miranda  
 Mitchell Miszewski  
 John Mitchell  
 Michael Moed  
 David Mohrman  
 Janet Molkenthin  
 Peter Moller  
 David Monaco  
 Normando Moquete  
 Julio Morales  
 Douglas Morehouse  
 Janet Morgan  
 Patricia Morgan  
 Rene Morin, CCMC  
 Linda Morkan  
 Ann Morrin  
 Brad Morse  
 Deborah &  
 Richard Muller, M.D.  
 Neil Mulligan  
 Jenna Murad  
 Elena Murphy  
 My People

Community Services  
 Kathleen Mylod  
 Wafaa Naggar  
 Anni Nagy  
 Mike Nakib  
 Lorraine Nalewajk  
 William Nation  
 Megan Naughton  
 Meghan Naujoks  
 Linda Naylor  
 Anthony Neidlinger  
 Adriana "Jeanette" Newell  
 John Nickolenko  
 Carol Noble  
 Jane Norman  
 John O'Brien  
 John O'Brien  
 James O'Brien  
 Karen Obuchowski  
 Daniel O'Connor  
 Susan O'Dea  
 Jessica O'Flannagan  
 Iliia O'Hearn  
 Carl Ohlin  
 Chris Orszulak  
 Patrick Owens  
 Kimberley Palma  
 David Panico

Mary & Achilles Pappano  
 Philip Parizeau  
 Robert & Jeanne Parker  
 David Parkinson  
 Kevin Passarelli  
 Chad Perkins  
 Peter Peterson  
 Robert Petrone  
 Megan Petsa  
 Shelley Phillips  
 Kathleen Phillips  
 Monique Picard  
 John Pilla  
 David Pilon  
 John Pinone  
 Katie Pitts  
 Karen Plevyak  
 Abigail Poirier  
 Leslie Poitras  
 Ethan Pope  
 Marilyn Popick  
 William Post  
 Russ Pratt  
 Wayne Prescott  
 Betsy Price  
 Linda Proctor  
 Kenneth Przybysz  
 Bennett Pudlin

Rosalie Puskar  
 Candra Quetant  
 James Quinlan  
 John Quinn  
 Melissa Ralston-Jones  
 Vanessa Ramirez-Vollmar  
 Major Ramsey  
 Stephan Rapaglia  
 Roy Raymond  
 Julie Recker  
 Norine Reingold  
 Valentin Remigio  
 Jennifer Remigio-Mandac  
 Donna Renouf  
 Retina Consultants  
 Patricia Reville  
 Karen Rheault  
 Joan Rhinesmith  
 Jeffrey Rich  
 Michel Ridgeway  
 Sue Riley  
 Juan Rivera  
 Diane Roach  
 Alexandra Robin  
 Christine Robinson  
 Tatiana Rodriguez  
 Stephani Roman  
 Deborah Romanski

Kathleen Ronstrom  
 Lucas Rosado  
 Erik Rosati  
 Theodore Rose  
 Aileen Rosensweig  
 Mike Ross  
 Werner Rosshirt  
 Edward Rousseau  
 Rowley Spring &  
 Corporation  
 Justin & Megan Rozzero  
 Stephanie Ruppert  
 David Russell  
 Joanne & David Russell  
 Linda Russell  
 Sue Ryker  
 Judith Satlof  
 Peter Scanlon  
 Pauline Schaefer  
 Sherrie Schallack  
 Jackie Scheib  
 Tim & Jackie Scheidegger  
 Bette Schubert  
 Dani Schuller  
 John Schuyler  
 Mary Scott  
 Sydney Scott  
 Seabury

Barbara Seagrave  
 Charmaine & Mike Seavy  
 Estela Segarra  
 Ronny Segura  
 Susan Seid  
 Deborah Selby  
 Senios Job Bank, Inc  
 Kelsey Sgarlata  
 Vincent Shaheen  
 Andrea Shantz  
 Jeffrey Sharbaugh  
 Dan Shaughnessy  
 Hilary Barshay Shaw  
 Kevin Shaw  
 Bonnie Sherman  
 Del Shilkret  
 Mia Shopis  
 Doreen Simonsen  
 Mike Ski  
 Eugene Skladnowski  
 Caroline Sloat  
 Wendy Wolcott &  
 Jeffrey Small  
 Adam Smart  
 Terrance Smith  
 Wesly Smith  
 Kisha Snell  
 Jennifer Snow  
 Shirlene Spinale  
 Tricia Springer  
 Jay Stearns  
 Thomas Steen  
 Stanley Stelmach  
 Melinda & Bradley Stevens  
 Robyn Stewart Johnson  
 Gregory Stewart  
 William Stocker  
 Stop & Shop  
 Community Bag Program  
 Jim Storms  
 Daniel Straffi  
 Dan Sullivan  
 Cassandra Taylor  
 Erin Taylor  
 Mark Teare  
 Dom Tedeschi  
 Kelly Tennant  
 Jason Terrell  
 The Inn at Woodstock Hill  
 Rachel Tiran  
 Wale Thomas

Ellen Thompson  
 Mark Thompson  
 Nancy Thurnauer  
 Keith Timme  
 Tricia Martin and  
 Jeremy Jackson Burrito  
 Rhonda Tobin  
 Angela Toomey  
 Michael Towell  
 Elizabeth Tracy  
 Anthony Tranghese  
 Nobuko Tsuji  
 Dennis Tulimieri  
 Agatha Uglesich  
 Larry Valintas  
 Peter Van Loon  
 Gregory Varga  
 Stuart & Susan Wachtel  
 Yijia Wang  
 James Ware  
 James Warnke  
 Julie Warren  
 Gregory Weaver  
 Jon Webber  
 Aislinn Weidele  
 Mitchell Weiss  
 Jonathan Weissbard  
 Bengt & Virginia Wennberg  
 Richard Werner  
 Michael Wessell  
 Marianne White  
 Kathy Wicz  
 Jeffrey Wigodsky  
 Brenda Williams  
 Christine Williams  
 Katherine & Stephen Wilson  
 Bill Berkrot  
 Tracy Wodatch  
 William Woodaman  
 George Woods  
 Reka Wrynn  
 Hui Wu  
 Danuza Yang  
 Beth Young  
 Darlene Young  
 Jeff Zahansky  
 Patricia Zdankiewicz  
 David Zegzdryn  
 Cam Zegzdryn  
 Gabriella Zink  
 Haley Zinn-Rowthorn  
 Charles Zoef



**Camp Jewell  
 Capital Campaign+**

The Alper Family  
 Arthur Eder Family Fund  
 Jennifer Bailit  
 John & Marla Byrnes  
 Camp Rising Sun  
 Shari Cantor  
 Jeff Caplow  
 Community Foundation  
 of Western Massachusetts  
 John Foehl  
 Ruth & Richard Grobe  
 S. Edward Jeter  
 Susan & Mark Joyse  
 Joel Lerner  
 Charlotte Massie  
 Judith & Brewster Perkins  
 JoAnn & James Price  
 Raymond Ruddy  
 Urban Act Grant  
 administered by the  
 Connecticut Department  
 of Energy & Environmental  
 Protection  
 Judith A. Stearns\*  
 Robert Stearns  
 Virginia J. Taft  
 James & Eileen Thomas  
 The David and Elaine Nord  
 Family Fund  
 Paul Travaglino  
 Robert Wylie  
 YMCA of the USA  
 Yvette & Arthur Eder  
 Charitable Foundation  
 The Zuffelato Family

**Camp Woodstock  
 Capital Campaign+**

Philip & Irma Allegretti  
 Andy Bauer  
 Diane Belcher  
 William Belcher  
 Lauren Bertolini & Family  
 Anne Bisenius  
 Linda P. and Theodore  
 J. Bruttomesso, Jr.  
 John & Marla Byrnes  
 Dan & Kim Cargill  
 Cindy & Vince Castagno  
 Sarah Chow & Justin  
 Perreault  
 Edward Church  
 Alex & Joe Clermont  
 Kathy Conroy  
 Marcus & Katy Dandurand  
 Richard Darrow  
 Craig Doucette  
 Rebecca Earl  
 Ron & Suzanne Felix  
 Risa & Roy Filkoff  
 Carl Fossum  
 Georgia's Homemade  
 Robin Silver Grace &  
 Bill Grace  
 Carey & Judy\* Greene  
 Christopher & Dorothy  
 Greene  
 Ruth & Richard Grobe  
 Anthony & Melany Gronski  
 John & Cathy Healy

The Hersey Family  
 Bruce & Karen Johnson  
 Susan & Mark Joyse  
 Frank Lucchesi  
 Heather & Jeff LeBlanc  
 Pam (Gordon) Levin  
 Michael Lopes  
 The McGann Family  
 Michael McGlamery  
 Susannah McGlamery &  
 Andrew Ranson  
 The McGrath Family  
 Robert Merritt &  
 Susan Lennon  
 The Nash Family  
 Newell D. Hale Foundation  
 Newell & Betty Hale Fund  
 of Greater Worcester  
 Community Foundation  
 Osterman Propane, LLC  
 Carol "Ma" Parkman  
 William E. Parkman  
 Judith & Brewster Perkins  
 Anne Pickart  
 Paul & Christine Pinette  
 Betsey Pitt  
 Scott & Norma-Jean  
 Posocco  
 John & Susan Preis  
 Jane Anderson Price  
 JoAnn & James Price  
 Michelle & Rob Rawcliffe  
 Mary Schone  
 Michael Sherman

Mike & Susan Sherman  
 Sadie & Matt Sloatsky  
 Judy Jo\* & Art Snyder  
 Tom & Tina Steen, John  
 Steen,  
 & Cynthia Steen Petti  
 in memory of Bill Steen  
 Nora & Ted Steinhauser  
 Joel & Amy Steinman  
 Stephen Taylor  
 Al Thatcher  
 The Darald and  
 Julie Libby Foundation  
 The Thibault-O'Beirne  
 Family  
 Ellen Dix Thompson  
 Brandon Tucker  
 Lili Diorio Walker  
 Debbie Stein Waxler  
 Craig Weinstein  
 Bruce Weissgold  
 Ashley Whamond  
 YMCA of the USA  
 George & Tracy Zack  
 The Zuffelato Family

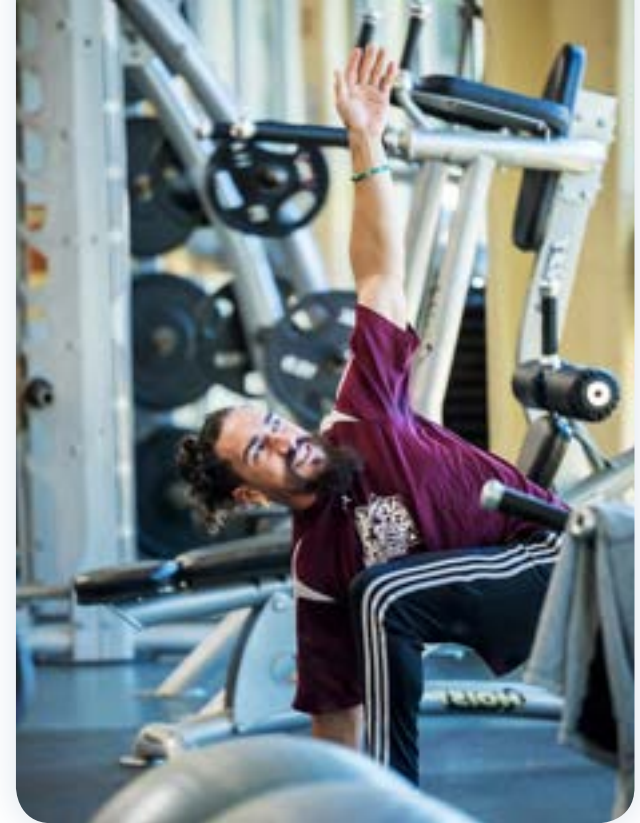
\*Deceased

+Pledges of \$1,000  
 or more made to  
 the Capital Campaigns  
 as of 12/31/23.

We have made every  
 effort to ensure the  
 accuracy of these lists.  
 We apologize if any error  
 has been made. Please  
 contact Jeff Williams,  
 Chief Development Officer  
 860-595-3048,  
 jeff.williams@ghymca.org,  
 to note any errors or  
 omissions. Thank you.

# The YMCA of Greater Hartford

## Summarized Financial Information for 2023



### Summary of Public Support, Revenues and Expenses

Public Support	
Contributions	2,581,667
United Way	29,667
Government Contracts & Grants	5,434,384
<b>Total Public Support</b>	<b>8,045,717</b>
Revenues	
Program Activities	15,314,572
Memberships	7,055,292
Merchandise Sales	392,725
Endowment allocation	1,945,716
Miscellaneous revenues	162,516
<b>Total Revenue</b>	<b>24,870,821</b>
<b>Total public support and revenue</b>	<b>32,916,539</b>
Expenses	
Salaries, taxes and benefits	18,252,931
Supplies and services	5,411,300
Utilities and occupancy	5,096,148
Promotion, vehicles and training	1,378,882
Other expenses	918,805
<b>Total expenses</b>	<b>31,058,065</b>
<b>Subtotal Excess (deficit)</b>	<b>1,858,474</b>
Less: Depreciation and amortization	2,887,151
<b>Net Excess (deficit)</b>	<b>(1,028,677)</b>
Investment and non-operating activity-net	9,053,299
Capital campaign activity-net	340,717
<b>Net change in assets</b>	<b>8,365,339</b>

### Summarized Balance Sheet

Assets	
Cash and equivalents	4,565,910
Investments	73,549,695
Receivables	1,736,183
Other assets	11,657,300
Land, Bldg, Equip - net	56,573,363
Trusts held by others	14,483,221
<b>Total assets</b>	<b>162,565,673</b>
Liabilities	
Payable and accrued expenses	1,972,013
Notes Payable and Line of credit	3,729,620
Deferred revenue	3,215,927
Other Liabilities	11,804,443
Bond payable	19,723,543
<b>Total liabilities</b>	<b>40,445,545</b>
Net Assets	
<b>Total net assets</b>	<b>122,120,128</b>
<b>Total net assets and liabilities</b>	<b>162,565,673</b>

This summarized financial information is taken from financial statements audited by independent public accountants. Copies of the audited financial statements and IRS Form 990 are available for examination at the YMCA's office.

### Constituency Report

Membership	
Different People Served	
Male	18,146
Female	19,169
Unknown	916
Youth	9,330
Adults	28,901
Total Members	38,231
Other Participants	27,120
<b>Total Constituency</b>	<b>65,351</b>
Personnel	
Employees Full Time	149
Employees Part Time	543
Seasonal	525
Supporters	
Fund Raising and Other Volunteers	504
Volunteer Boards and Committees	185
Donors	2,929

### Our Mission

The YMCA of Greater Hartford is a charitable association open to all and committed to helping people develop their fullest potential in spirit, mind and body. This commitment is reinforced by our belief in living out the universal values of caring, honesty, respect and responsibility.

### Belong to Something Greater

Passionate about strengthening our communities by positively impacting the life of every person.

**YMCA of  
Greater Hartford Branch  
Locations\***

**Camp Jewell YMCA**

6 Prock Hill Road  
Colebrook, CT 06021  
1-888-412-2267  
Craig Dawson,  
Branch Executive  
Jessica Brown,  
Branch Board Chair

**Camp Woodstock YMCA**

42 Camp Road  
Woodstock Valley, CT  
06282  
1-800-782-2344  
Tony Gronski,  
Branch Executive  
Heather LeBlanc,  
Branch Board Chair

**Downtown YMCA**

90 State House Square  
Hartford, CT 06103  
860-522-4183  
Laura Floyd,  
Branch Executive  
Lloyd Huie,  
Branch Board Chair

**East Hartford YMCA**

770 Main Street  
East Hartford, CT 06108  
860-289-6612  
Laura Floyd,  
Branch Executive  
Randi Ricketts,  
Branch Board Chair

**Farmington  
Valley YMCA**

97 Salmon Brook Street  
Granby, CT 06035  
860-653-5524  
Brian P. Liss,  
Branch Executive  
Reverend  
Sandra Fischer,  
Branch Board Chair

**Glastonbury Family/  
Tri-Town YMCA**

95 Oakwood Drive  
Glastonbury, CT 06033  
860-633-6548  
Marissa Casarella,  
Branch Executive  
Vacant  
Branch Board Chair

**Hale YMCA Youth  
and Family Center**

9 Technology Park Drive  
Putnam, CT 06260  
860-315-9622  
Amanda Kelly,  
Branch Executive  
Kate Taylor,  
Branch Board Chair

**Indian Valley YMCA**

11 Pinney Street  
Ellington, CT 06029  
860-871-0008  
David Corricelli,  
Branch Executive  
Dan Cargill,  
Branch Board Chair

**West Hartford YMCA**

149 Farmington Avenue  
Plainville, CT 06062  
860-521-5830  
Donelle Daigle,  
Branch Executive  
Jocelyn Hillard,  
Branch Board Chair

**Wheeler Regional  
Family YMCA**

149 Farmington Avenue  
Plainville, CT 06062  
860-793-9631  
Donelle Daigle,  
Branch Executive  
Vacant  
Branch Board Chair

**Wilson-Gray YMCA Youth  
and Family Center**

444 Albany Avenue  
Hartford, CT 06120  
860-241-9622  
Aristede Hill,  
Branch Executive  
Traci Carter,  
Branch Board Chair

**Metropolitan  
YMCA Staff\***

Harold Sparrow  
President and CEO

Kimberly Cole  
Chief Operating Officer

Susan Joyse  
Chief Development  
Officer

Josslyn Grindle  
Chief Human  
Resource Officer

Robert Herr  
Vice President  
of Finance and CFO

Steve Phillips  
Vice President of Facilities

Valencia Williams  
Vice President of  
Operations

Jeff Williams  
Associate Vice President  
of Development

Gina Gaipa  
Association Director  
of Management  
Information Systems

Lisa Paterson  
Association Director  
of Membership

Ronny Segura  
Director of Information  
Technology

Stacia Shaw  
Director of Development

Natalie Zembrzuski  
Director of  
Executive Relations

**Directors\***

Julianne Avallone

Jessica Brown

Dan Cargill

Traci Carter

Mike DeFeo

Jason Fazio

Reverend Sandra Fischer

Cora Hall

Jocelyn Hillard

Aina Hoskins

Lloyd Huie

Linda Knox

Heather LeBlanc

Jim Martin

Timothy McGrath

James Michel

Tom Mongellow

Marino Monti

Peter Olson

Thomas J. Rechen

Tim Restall

Randy Ricketts

Carmen Sierra

Harold Sparrow

Kate Taylor

Dr. Daniel Weiner

Diane Zalewski

Scott Zuffelato

**Trustees\***

Peter Atherton

Edward F. Bader

Kim Bishop

P.J. Brewer

Theodore Bruttomesso

Richard Burness

John F. Byrnes

Eric Clapprood

Maura Cochran

Julio Concepcion

Tamara Gloster

Ruth H. Grobe

Laurence Hale

S. Edward Jeter

Phil Kane, Jr.

Evelyn Karaj

Annette Larabee

Coleman Levy, Esq.

Sherry Manetta

I. Charles Mathews

Richard G. McGeary

Jocelyn Mitchell

Patrick Nickoletti

Jody Osko-Lewis

Carolyn Paldino

Brewster B. Perkins

Angela Phillips-Arrington

JoAnn Price

Stacy Raney

Lena Rodriguez

Richard J. Shima

Arthur Snyder

Gary T. Wolff

Jim Zahansky

**Officers\***

Peter Olson,  
Board Chair

Linda Knox,  
Vice Chair

Tom Rechen,  
Vice Chair

Scott Zuffelatto,  
Vice Chair

Rich Burness,  
Past Board Chair

Tim McGrath,  
Treasurer

Julianne Avallone,  
Secretary

Harold Sparrow,  
President and CEO

\*Current as of 12/31/2023

Credits: Harold Sparrow;  
President and CEO,  
Bob Herr, Vice President  
of Finance and CFO;  
Jeff Williams, Chief Development  
Officer; Jennifer Farina, Senior  
Development Operations Manager;  
Gina Gaipa, Association Director of  
Management Information Systems;  
Natalie Zembrzuski, Director  
of Executive Relations;  
Copywriting: Joel Samberg;  
Design: Christopher Passehl,  
Passehl Design; Photography:  
J. Fioreck Photography;  
Printing: GHP

## Board of Directors



**Peter Olson**  
CBRE | Global  
Workplace Solutions



**Harold Sparrow**  
YMCA of Greater Hartford



**Julianne Avallone**  
Department of Consumer  
Protection, State of Connecticut



**Jessica Brown**  
The Nature Conservancy



**Dan Cargill**  
Connecticut Coalition Against  
Domestic Violence



**Traci Carter**  
Anchors Investment



**Mike Defeo**  
Coca-Cola Beverages  
Northeast



**Jason Fazio**  
JF IV Holdings, LLC



**Reverend Sandra Fischer**  
East Granby  
Congregational Church



**Cora Hall**  
The Travelers



**Jocelyn Hillard**  
American Red Cross



**Aina Hoskins**  
Squadron Capital LLC



**Lloyd Huie**  
Liberty Bank



**Linda Knox**  
The Knox Group



**Heather LeBlanc**  
ABB



**Jim Martin**  
Barnum Premier  
Client Group



**Timothy McGrath**  
UnitedHealthcare



**James Michel**  
Access Health CT



**Tom Mongellow**  
Connecticut Bankers  
Association



**Marino Monti**  
Voya Financial



**Thomas J. Rechen**  
McCarter & English



**Tim Restall**  
Hartford Yard Goats  
Baseball



**Randy Ricketts**  
The Missing Piece



**Carmen Sierra**  
City of Hartford



**Kate Taylor**  
Fidelity Investments



**Dr. Daniel Weiner**  
University of Connecticut



**Diane Zalewski**  
Cigna HealthCare



**Scott Zuffelato**  
Naismith Basketball  
Hall of Fame

Thank You.

