



THE YMCA OF GREATER HARTFORD 2022 ANNUAL REPORT IMPRESSIONS OF IMPACT



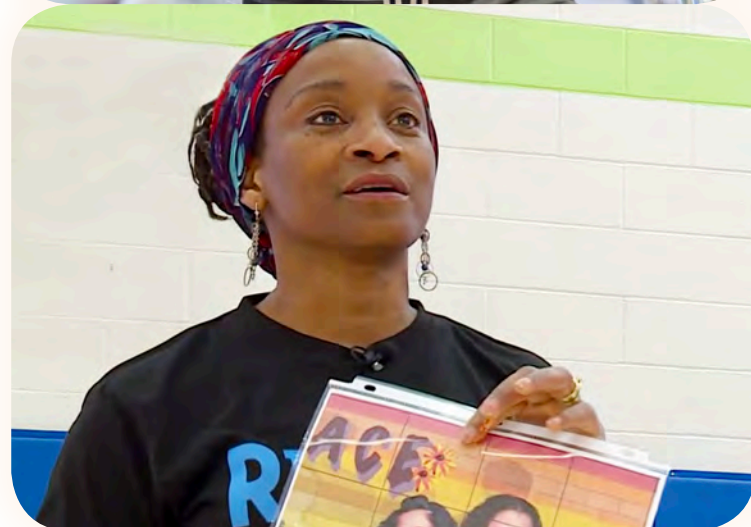
# THE RESILIENCE OF DIVERSITY

Assembled by young and old alike, a King-sized legacy at Hale

A mural, like a community, is a mosaic. A montage. The YMCA, like the communities it serves, is equally diverse and inclusive in what it accomplishes—and who the accomplishments are for.

At Hale, this is vibrantly evident with the recent unveiling of its new MLK mural. When you pass by on your way up the driveway, you can't help but feel the hope, community spirit, and pride.

After muralist Emida Roller (bottom left) came up with the concept based on public feedback, a broad canvas of Y members and local citizens brought it to life.



Opportunities often arise from challenges. Though it is our fervent wish that we never again face another pandemic, that challenge did accomplish two important things. It reinforced just how important we are to our communities and how resilient our people and programs consistently prove to be. It also compelled us to do whatever we can to reconnect, reengage, and reinspire.

The result? The year 2022 was a successful one for the YMCA of Greater Hartford. Our camps were full, our afterschool programs were strong, our members were motivated, and our entire staff was resilient, resourceful, and highly energized.

We would like to let you in on a little secret. Writing this letter represents yet another challenge. Why? Because what is vitally important to us is where we are now and where we are headed in the months ahead, not necessarily where we've been. Annual reports by definition must discuss the past. But we're eager to talk about the present and the future.

We think we can do both. After all, resilience was the operative phrase for all of 2022, and there is every reason to believe that it will remain the driving force for 2023 and beyond. By that measure alone, our current and future story will likely be a direct reflection of our 2022 achievements.

Along with the resilience that rang out loud and clear, and the camp and afterschool programs that made us so proud, there were many additional highlights that define the Y in 2022. To mention just a few, we celebrated the 100-year anniversary of Camp Woodstock; welcomed back hundreds of campers at all of our day and overnight camps; our **LIVESTRONG**® at the Y program for cancer survivors was stronger than ever; and we successfully focused on strengthening our capacity to create a bigger impact throughout 2023 in all the communities we serve.

Also, through thoughtful reflection and decisive action, we made a major investment in our diversity, equity, and inclusion initiative; launched an exciting new Growth Strategy Task Force that is sure to deliver highly constructive results; and were overjoyed with the enormous level of success we achieved in our vital fundraising efforts.



Harold Sparrow, President and CEO, left, with Peter Olson, Board Chair

Las oportunidades a menudo surgen de los desafíos. Aunque es nuestro ferviente deseo que nunca más enfrentemos otra pandemia, ese desafío logró dos cosas importantes. Subrayó lo importante que somos para nuestras comunidades y lo resiliente que demuestran ser constantemente nuestra gente y nuestros programas. También nos obligó a hacer todo lo posible para reconectarnos, volver a comprometernos y volver a inspirarnos.

¿El resultado? El año 2022 fue exitoso para la YMCA de Greater Hartford. Nuestros campamentos estaban llenos, nuestros programas extracurriculares eran sólidos, nuestros miembros estaban motivados y todo nuestro personal era resistente, ingenioso y muy energizado.

Nos gustaría contarte un pequeño secreto. Escribir esta carta representa otro desafío más. ¿Por qué? Porque lo que es de vital importancia para nosotros es dónde estamos ahora y hacia dónde nos dirigimos en los próximos meses, no necesariamente dónde hemos estado. Los informes anuales, por definición, deben tratar del pasado. Pero estamos ansiosos por hablar sobre el presente y el futuro.

Creemos que podemos hacer ambas cosas. Después de todo, la resiliencia fue la frase operativa durante todo el año 2022, y hay muchas razones para creer que seguirá siendo la fuerza impulsora para el 2023 y más allá. Al considerar solo esa medida, nuestra historia actual y futura probablemente será un reflejo directo de nuestros logros en el 2022.

Junto con la resiliencia que resonó alto y claro, y los campamentos y programas extracurriculares que nos enorgullecieron tanto, hubo muchos aspectos destacados adicionales que definen la "Y" en 2022.

Para mencionar solo algunos, celebramos el aniversario de 100 años de Camp Woodstock; dimos la bienvenida a cientos de campistas en todos nuestros campamentos diurnos y nocturnos; nuestro **LIVESTRONG**, en el programa de la "Y" para sobrevivientes de cáncer, fue más fuerte que nunca; y nos enfocamos exitosamente en fortalecer nuestra capacidad para crear un mayor impacto a lo largo de 2023 en todas las comunidades a las que servimos.

Además, a través de una reflexión cuidadosa y una acción decisiva, hicimos una gran inversión en nuestra iniciativa de diversidad, equidad e inclusión; lanzamos un nuevo y emocionante Grupo de Trabajo de Estrategia de Crecimiento que seguramente brindará resultados muy constructivos; y nos llenamos de alegría con el enorme nivel de éxito que hemos logrado en nuestros esfuerzos vitales de recaudación de fondos.

Finalmente, las visitas que hicimos a nuestras instalaciones, lo que llamamos nuestra gira de Pertenecer a Algo Más Grande, resultaron ser una revelación debido a la cantidad de personas que conocimos que expresaron en términos inequívocos que la aceptación que sienten en la YMCA no tiene igual. Docenas de asociados del personal nos dijeron que trabajar en la "Y" les da una sensación de satisfacción, propósito y logro que muchas veces es tan raro en el mundo actual.

Ese último punto destacado que mencionamos es tan importante porque va directamente al corazón de lo que hace que la "Y" sea la "Y". Durante generaciones, nuestra misión ha sido ser un lugar donde todas y todos sean bienvenidos y tengan la oportunidad de convertirse en la persona que realmente quieren ser. Ese es nuestro objetivo primordial.

En la YMCA, exploramos el arte de lo posible. Y es muy posible que, dados todos los desafíos recientes, lo estamos haciendo mejor que nunca.

Finally, the visits we made to our facilities—what we called our Belong to Something Greater tour—proved to be a revelation because of the number of people we met who expressed in no uncertain terms that the acceptance they feel at the YMCA is second to none. Dozens of staff associates told us that working at the Y gives them a sense of gratification, purpose, and achievement that is often so rare in today's world.

That last highlight we mentioned is such an important one because it cuts right to the heart of what makes the Y the Y. For generations, it has been our mission to be a place where everyone is welcomed and has the chance to develop into the person they truly want to be. That's our overriding goal.

At the YMCA, we explore the art of the possible. And it's quite possible that, given all the recent challenges, we're doing better than ever.

Peter Olson  
Board Chair

Harold Sparrow  
President and CEO

# LIVING RESILIENT LIVES

**LIVESTRONG® at the Y:**  
Exercising the right to  
have friends who care

If any organization has a name that gets right to the heart of the matter, it's LIVESTRONG. Our cancer support group consistently proves to be as life-affirming as faith, hope, and friendship.

When members get together to share their reactions to the program—which combines social engagement with moderate exercise—the words Amazing, Comfortable, and Wonderful come up time and time again.

---

Whether chatting about group stretching or personal bonds, this group of cancer patients at the Indian Valley Y agree that LIVESTRONG is a beacon of physical and emotion resilience.



# A CENTURY OF SUMMER RESILIENCE

A hundred years,  
ten thousand memories

What do shyness  
and hurricanes have  
in common?

When you're  
talking about Camp  
Woodstock, both  
come up in reference  
to the resilience that  
distinguishes our  
amazing summer  
camp, now celebrating  
its 100<sup>th</sup> anniversary.

Introverted campers  
have become  
distinguished staffers.  
Demolished structures  
have risen anew. As  
a recent 100-year  
celebration clearly  
proved, all participants,  
past and present, take  
great stock in the  
personal, social, and  
spiritual benefits of  
Camp Woodstock.

"We are Woodstockers!"  
has been a loud and proud  
proclamation from campers,  
staffers, and leaders for  
100 years. Probably  
for the next 100, too.



**READY TO BE RESILIENT**

Preparing kids to learn and grow is a community, school, and family affair

The YMCA partners with East Hartford Public Schools in a wide-ranging 'school readiness' initiative designed to prepare each student for a best-in-class academic experience.

Enhanced family communication, ambitious yet achievable goals for each child, and open access to Y programs and facilities are all part of the partnership. Even some recent challenges have not diminished our tremendous success.

Expressions of joy and curiosity are just some of the consequences of our vibrant school partnership.



6

MEMBERSHIP BRANCHES

2

OVERNIGHT CAMPS

23

CHILD DEVELOPMENT SITES

4

PROGRAM BRANCHES

52

COMMUNITIES SERVED



### OUR CAUSE

**60,000**

youth and adults engaged with the Y through programs and facility memberships.

Over

**\$1,000,000**

distributed in Financial Assistance, providing a place for people to belong at the Y.

Nearly

**1,000**

volunteers.

**3,139**

donors invested in their community with a donation to the Y.

### YOUTH DEVELOPMENT

**24,000\***

youth experiences through leadership activities and academic support in child development programs.

Over

**10,000\***

camp opportunities where youth made friends, stayed active, and learned life skills.

### HEALTHY LIVING

Over

**5,400\***

people learned the life-saving skill of swimming.

**7,600**

senior members participated in programs, increasing physical activity and social interaction.

More than

**42,000**

meals and nearly

**27,000**

snacks were served to youth enrolled in preschool, summer camp, and after-school programs in Hartford, East Hartford, and Rockville.

### SOCIAL RESPONSIBILITY

Over

**6,500\***

teens had a safe place to go and a caring adult role model by participating in Y programs.

Over

**50**

individuals participated in adaptive fitness programs, helping those with a physical disability achieve positive health outcomes.

\*Indicates duplicated participants enrolled in multiple program sessions.



WHO WE ARE: OUR STORY IN STATS

**RICHARD J. BURNES** Robert C. Knox, Jr. YMCA Distinguished Leadership Award Recipient



Past Knox Award Recipients

- 1977 Robert C. Knox, Jr.\*
- 1978 The Hon. Thomas D. Gill\*
- 1979 Frederick U. Conard, Jr.\*
- 1980 William H. Short\*
- 1981 Richard B. Haskell\*
- 1982 Reese H. Harris, Jr.\*
- 1983 Herbert R. Bland\*
- 1984 Earnest T. Andrews, Jr.\*
- 1985 J. Ronald Regnier\*
- 1986 Donald P. Richter\*
- 1987 William K. Cole\*
- 1988 Morrison H. Beach\*
- 1989 Robert E. Carroll, Jr.\*
- 1990 Raymond W. Stahl\*
- 1991 Warren A. Hunt\*
- 1992 Robertson Mackay\*
- 1993 Donald J. Hayes\*
- 1994 Raymond B. Green\*
- 1995 Alfred R. Rogers
- 1996 Raymond H. Deck\*
- 1997 Harold C. Buckingham, Jr.\*
- 1998 R. Michael Curran
- 1999 Judith A. Stearns\*
- 2000 J. Philip Denison\*
- 2001 Chandler J. Howard
- 2002 Myron E. Congdon
- 2003 Michael M. Hopkins
- 2004 Gerald Geise
- 2005 James T. Betts
- 2006 Arthur Snyder
- 2007 Laura Estes
- 2008 William Petit, Sr.
- 2009 John F. Byrnes
- 2010 Warren C. Packard\*
- 2011 Ruth H. Grobe
- 2012 JoAnn Price
- 2013 Al Wilke
- 2014 I. Charles Mathews
- 2015 Daniel C. Tracy
- 2016 Peter B. Atherton
- 2017 Gary Wolff
- 2018 Jerald (Jerry) Gooden
- 2019 Philip Kane, Jr.
- 2020 Betty Hale
- 2021 Edward F. Bader
- \* Deceased

Richard Burnes is most comfortable when he is out of his comfort zone. That attitude is what has guided most of the decisions he's made, from his college days to his professional climb to success.

Rich, an expert in corporate and international tax and accounting, has been applying his skills for more than 40 years at some of the top firms in the field, including Price Waterhouse, Aetna, and Deloitte, where he was a partner.

He enjoys taking on new and sometimes daunting projects, even if they're not entirely connected to his past activities. That, of course, merely puts him into a zone in which he excels. "I pride myself on avoiding panic," he says. "I believe that every problem is solvable." As a result of this philosophy over the years, his corporate life and Y participation have been of great value—the kind for which recognition with a Robert C. Knox, Jr. YMCA Distinguished Leadership Award can be considered a foregone conclusion.

But not everything in his life has been a foregone conclusion. Take college, for example. As a Jewish boy growing up in New Haven and Orange, Connecticut, his decision to attend the Jesuit-affiliated Boston College may seem surprising to some—but once again, it represented one of those out-of-the-comfort-zone decisions he craves.

"The Jesuits focus on serving. That was something I already had an inclination for as a teenager. At Boston College, it was drilled into us, and I knew it could lead to something profound and meaningful," Rich explains. "For me, it was the right thing to do."

His proficiency in financial matters and instinctive aptitude to grasp the most intricate of complicated tax issues is a combination of natural ability and the drive instilled in him by his parents. In particular, it was his mother who instilled in him his drive and strong work ethic, and who also had the highest expectations for him.

In the early days, music struck a more important note than finance, with young Richard singing in rock bands while playing the guitar (poorly, he insists), performing in musical comedies and in his high school choir, and even singing at the Vatican with the Boston College Chorale.

Not long after his career was launched, he accepted an assignment in Brussels, taking on responsibility for American tax practices as they related to U.S. interests in Belgium, Luxembourg, the Netherlands, Norway, Sweden, and Denmark. For someone so early in their career, this, too, was a comfort zone dodge. But he was resilient and thrived.

Throughout his career—which has involved helping many people successfully navigate assets, taxes, and regulatory issues—Rich has abided by his personal philosophies to serve himself and his clients well. These included not fearing a misstep here or there in pursuit of excellence—"because sometimes you learn more from your mistakes than from your successes"—as well as keeping a steady hand and never overreacting. "I try not to let anything bother me," he admits. "I build consensus. I let people be heard. I want them to do their jobs, with as much support and advice as I think is necessary without stepping on toes. When people are encouraged, they do the right thing."

These are the attributes he has brought to the Y for almost 20 years now.

When first asked to come aboard, he was rooted in a corporate career that kept him on the road for long periods of time. But once again, he took a chance on new responsibilities and accepted a series of advisory positions. After volunteering at the Indian Valley YMCA, he was told that his sharp financial mind was needed downtown. He couldn't say no.

He joined the association's Board of Directors in 2012, served as Assistant Treasurer and Board Chairman, and he currently serves on the Board of Trustees and leads the Governance Committee.

Rich, now a full-time consultant who lives in Florida—he's single and has two grown daughters and three grandchildren in Connecticut—believes the Y's goal is to reinvent itself as necessary while never straying from its mission and to continue to seek ways to convince the community that the Y is a lot more than just a fitness center. And he's always willing to help reinforce that mission.

"I accept challenges because I think it's the right thing to do. But I'll also admit to feeling humbled about being recognized for the value I bring." By now, that's a feeling that should be right in his comfort zone.





## Major Gifts

Our major donors make a large personal investment in the Y's mission-driven programs, services, and projects that deliver positive outcomes and build lifelong success. We are honored to acknowledge their generosity with membership in our Leadership Circle. This special society is reserved for the Y's most generous friends whose annual gifts total \$10,000 or more or have lifetime contributions in excess of \$1 million.

"Through philanthropic investments made by the Squadron Charitable Trust, we are helping families send their children to summer camp where they will be exposed to positive experiences that lay the foundation for personal growth and lifelong success. We believe the Y reaches across economic and social spectrums. It is also very well distributed, not just in urban areas, but in rural and suburban areas, where the Y has had a big impact in the community. If you want to impact a lot of people, especially youth, the Y is a great place to make that mark."

- David Pelizzon, President of Squadron Capital (shown above) with Aina Hoskins, Executive Officer, and YMCA staff and volunteer leaders, in front of the Squadron Pavilion located at Camp Chase YMCA, dedicated August 31, 2022.

Dr. Linda S. Alexander  
 Toten Bacardi  
 William Belcher  
 Stefanie Birkmann & Sunil Savkar  
 Ed & Mary Budd  
 Mary & Theodore Gawlicki  
 Carole Goldberg  
 Ruth & Richard Grobe  
 Betty Hale  
 Sherry Manetta & Brian Harvey  
 Elwyn Harp, Roosa Family Memorial Fund at the Hartford Foundation for Public Giving  
 Kimberly & Michael Hecht  
 Sandra Kuhach & Peter Axilrod  
 Patricia Morgan Beagary Charitable Trust  
 David & Elaine Nord  
 David Pelizzon, Squadron Capital LLC  
 JoAnn & James Price  
 Arthur Snyder

## The Heritage Club

The Y's planned giving society, The Heritage Club, honors individuals who have made a planned gift to benefit the Y and its 12 branches and camps. Such gifts follow one's life and might include an estate gift, bequest of life insurance, IRA distributions, charitable gift annuities, charitable remainder unitrusts, or charitable remainder annuity trusts. We are deeply grateful for the generosity of our over 250 Heritage Club members whose planned gifts will allow the Y to serve our communities well into the future.

Douglas Aherns\*  
 Lewis W. Allen\*  
 Florence Allen Trust  
 Florence Allis\*  
 Harry N. Anderson\*  
 David Anderson\*  
 Anonymous (several)  
 Graham H. Anthony\*  
 Jose Arruda  
 Peter B. Atherton  
 Pauline Baker\*  
 Amy Barnard\*  
 Barney World Service Fund  
 Mervyn Barton\*  
 Jerome Baskin\*  
 Ruth W. and Merton W. Bassett Trust  
 Morrison and Evelyn Beach\*  
 John H. Beardsley\*  
 Eleanor Beardsley\*  
 Allen Beavers, Jr\*  
 William & Ellen\* Belcher  
 John C. Bennett  
 Alice Bennett\*  
 Paul & Jeri Berkel  
 Amy C. Bernard\*  
 Allyn Bernard\*  
 James T. & Joan Betts  
 Harold Bidwell\*  
 Edwin Bingham\*  
 J. Walton Bissell\*  
 Robert A. Boardman\*  
 David W. & Betts Bradley\*  
 Philip & Dottie Breux\*  
 Rae H. Brewster\*  
 Gary P. Brinson  
 Bruce & Marge Brown  
 Helen Brown\*  
 Nancy Bruce\*  
 Linda P. & Theodore J. Bruttomesso, Jr.  
 Marion Buchanan\*  
 Harold C. Buckingham, Jr.\*  
 May Bulakavo  
 Paul R. Burch\*  
 Richard J. Burness  
 George D. Burnham\*  
 Martin A. Burnham\*  
 Lena A. Burwell\*  
 Anna Butler\*  
 William & Pricilla Butler\*  
 John & Marla Byrnes  
 John Spencer Camp\*  
 Jeanette & Fred Campbell\*  
 Mrs. Austin Carey\*  
 Mike Carlson\*  
 Stuart Bruce Carlson\*  
 Anne & Robert E. Carroll, Jr.\*  
 Rhoda & David\* Chase  
 Mabel H. P. Clard\*  
 Mabel Clark\*  
 Robert Coburn\*  
 Maura & William Cochran  
 Carol Cole\*  
 William K. Cole\*  
 Shawn Collins\*  
 Frederick U. & Annette Conard\*  
 Myron Congdon  
 John J. Corning\*  
 Jerry Coursey\*  
 Florence S. M. Crofut\*  
 Sidney Crofut\*  
 Catherine Crowley  
 Caroline Crowley\*  
 R. Michael & Nancy Curran  
 Minnie Curran\*  
 Fanny P. Curtin\*  
 Anna Curtiss\*  
 The Dandeneau Family  
 Robert Darling\*  
 Douglas Aherns\*  
 Lewis W. Allen\*  
 Florence Allen Trust  
 Florence Allis\*  
 Harry N. Anderson\*  
 David Anderson\*  
 Anonymous (several)  
 Graham H. Anthony\*  
 Jose Arruda  
 Peter B. Atherton  
 Pauline Baker\*  
 Amy Barnard\*  
 Barney World Service Fund  
 Mervyn Barton\*  
 Jerome Baskin\*  
 Ruth W. and Merton W. Bassett Trust  
 Morrison and Evelyn Beach\*  
 John H. Beardsley\*  
 Eleanor Beardsley\*  
 Allen Beavers, Jr\*  
 William & Ellen\* Belcher  
 John C. Bennett  
 Alice Bennett\*  
 Paul & Jeri Berkel  
 Amy C. Bernard\*  
 Allyn Bernard\*  
 James T. & Joan Betts  
 Harold Bidwell\*  
 Edwin Bingham\*  
 J. Walton Bissell\*  
 Robert A. Boardman\*  
 David W. & Betts Bradley\*  
 Philip & Dottie Breux\*  
 Rae H. Brewster\*  
 Gary P. Brinson  
 Bruce & Marge Brown  
 Helen Brown\*  
 Nancy Bruce\*  
 Linda P. & Theodore J. Bruttomesso, Jr.  
 Marion Buchanan\*  
 Harold C. Buckingham, Jr.\*  
 May Bulakavo  
 Paul R. Burch\*  
 Richard J. Burness  
 George D. Burnham\*  
 Martin A. Burnham\*  
 Lena A. Burwell\*  
 Anna Butler\*  
 William & Pricilla Butler\*  
 John & Marla Byrnes  
 John Spencer Camp\*  
 Jeanette & Fred Campbell\*  
 Mrs. Austin Carey\*  
 Mike Carlson\*  
 Stuart Bruce Carlson\*  
 Anne & Robert E. Carroll, Jr.\*  
 Rhoda & David\* Chase  
 Mabel H. P. Clard\*  
 Mabel Clark\*  
 Robert Coburn\*  
 Maura & William Cochran  
 Carol Cole\*  
 William K. Cole\*  
 Shawn Collins\*  
 Frederick U. & Annette Conard\*  
 Myron Congdon  
 John J. Corning\*  
 Jerry Coursey\*  
 Florence S. M. Crofut\*  
 Sidney Crofut\*  
 Catherine Crowley  
 Caroline Crowley\*  
 R. Michael & Nancy Curran  
 Minnie Curran\*  
 Fanny P. Curtin\*  
 Anna Curtiss\*  
 The Dandeneau Family  
 Robert Darling\*  
 John Davis\*  
 Raymond H. & Ronnie Deck\*  
 Charles W. Deeds\*  
 George & Jenny Demars\*  
 J. Philip\* & Marsha Denison  
 Stanley Dimock\*  
 Leslie Dow\*  
 Peter & Deborah Dowling  
 Edward Dunn  
 Charles T. Dwight\*  
 Lawrence A Eddins\*  
 Shayna Ellovich  
 Mrs. Grace Ellsworth\*  
 Lucius Elmer\*  
 Morton A. Elsner\*  
 Annie Elwin\*  
 Robert K. & Mary Elva Erf\*  
 Roy & Risa Filkoff  
 Gustave Fischer\*  
 Nancy\* & Robert Fitzgerald  
 Donald Flaxman\*  
 George Flynn\*  
 Gary & Meg Forster  
 Arthur W. & Jane\* Frank  
 Abraham Friedman Trust  
 Seldon Geer\*  
 Gerry & LaDona Geise  
 Charles Gersten\*  
 Mark Giddings\*  
 Hon. Thomas Gill\*  
 Bernard Gilman\*  
 Milton Glover\*  
 Charles C. Goding  
 Jerald & Linda Gooden  
 Richard & Karen Goodwin  
 James L. Goodwin\*  
 Loius H. Graham Trust  
 Ellsworth S. Grant\*  
 Raymond B. & Barbara Green\*



Jim and Deb Dandeneau, new Heritage Club members.

John Davis\*  
 Raymond H. & Ronnie Deck\*  
 Charles W. Deeds\*  
 George & Jenny Demars\*  
 J. Philip\* & Marsha Denison  
 Stanley Dimock\*  
 Leslie Dow\*  
 Peter & Deborah Dowling  
 Edward Dunn  
 Charles T. Dwight\*  
 Lawrence A Eddins\*  
 Shayna Ellovich  
 Mrs. Grace Ellsworth\*  
 Lucius Elmer\*  
 Morton A. Elsner\*  
 Annie Elwin\*  
 Robert K. & Mary Elva Erf\*  
 Roy & Risa Filkoff  
 Gustave Fischer\*  
 Nancy\* & Robert Fitzgerald  
 Donald Flaxman\*  
 George Flynn\*  
 Gary & Meg Forster  
 Arthur W. & Jane\* Frank  
 Abraham Friedman Trust  
 Seldon Geer\*  
 Gerry & LaDona Geise  
 Charles Gersten\*  
 Mark Giddings\*  
 Hon. Thomas Gill\*  
 Bernard Gilman\*  
 Milton Glover\*  
 Charles C. Goding  
 Jerald & Linda Gooden  
 Richard & Karen Goodwin  
 James L. Goodwin\*  
 Loius H. Graham Trust  
 Ellsworth S. Grant\*  
 Raymond B. & Barbara Green\*



William M. Griffin\*  
 Betty Hale  
 Elizabeth Hammond\*  
 Elwyn & Elsie Harp  
 James Harris  
 Peter Harris  
 Steve Harris  
 A. Richard & Joan Harris\*  
 Capt. Myron A. Harris\*  
 E.F. Harrison\*  
 Kim Harty  
 Anthony Hawes  
 Bruce P. Hayden\*  
 Donald J.\* & Eleanor Hayes  
 Hillyer Institute  
 H.R. & C.E. Hillyer\*  
 Idamae Hobbs\*  
 Robert B. & Nancy Jo Hoffman  
 Aaron Hollander Fund  
 Simon Hollander Fund

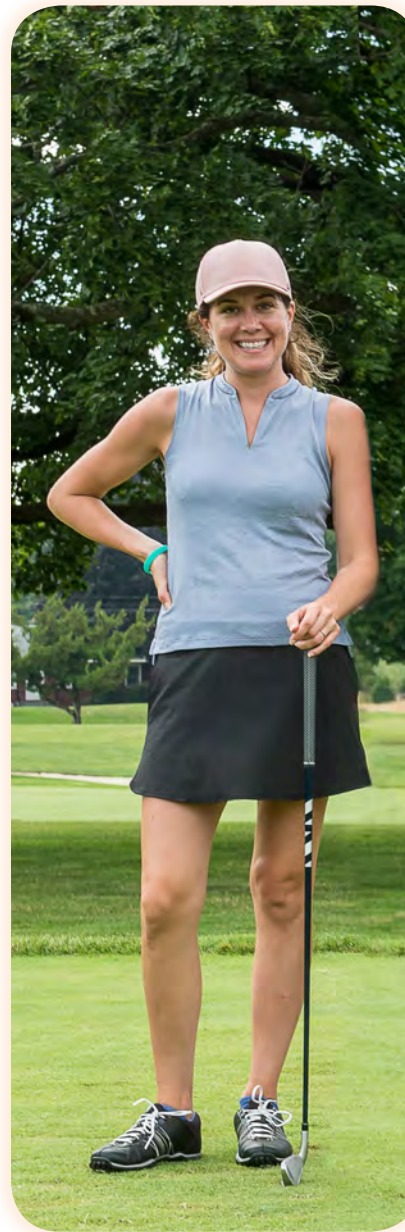
Michael M. & Marie\* Hopkins  
 Margaret Humphrey  
 Warren J.\* & Dollie Hunt  
 In memory of Everett Geer  
 Edith L. and Ward S. Jacobs\*  
 John Jacobs\*  
 Stephen Jacoby\*  
 Wilson C. Jainsen\*  
 Catherine D. Jervey \*  
 Charles Jervy Trust\*  
 S. Edward & Michael Jeter  
 Bruce & Karen Johnson  
 Kenneth & Christine Jones  
 Jeremy S. & Carolyn Jones\*  
 Wayne Kellner  
 Calvert & Phyllis Kerstead\*  
 Harold W. Kilbourne\*

George Kimball\*  
 KK McLane Trust  
 Louise J. Klett  
 Archie Knowles\*  
 Estelle L. Knox\*  
 Robert C. Knox Jr\*  
 Amy S. Kulle\*  
 Frank and Ethel Layton\*  
 Howard W. Leuter\*  
 Ferne Lienhard\*  
 Brian P. & Christine Liss  
 Sidney Locke\*  
 Barry Loucks\*  
 Robertson & Jackie Mackay\*  
 Mr. & Mrs. Christine D. Malins\*  
 Christine C. & Richard Marcks  
 Edwin W. Marvin, Jr.\*  
 Mrs.Charlotte L. Massie & Mr. Bob Pryzvylski  
 H. Stuart Massie, Jr.\*

Mike McGlamery  
 Paul McNulty  
 Helen Mellander\*  
 Thorston O. Mellander\*  
 Susan Miller  
 Jocelyn Mitchell  
 Marjorie Moore\*  
 Karl P. Morba\*  
 James\* & Lois Nassau  
 Alan Nathan  
 Robert L. & Jo-Anne Neal\*  
 Robert & Mim Nichols\*  
 Warren C.\* & Florence Packard  
 Arabella Paine\*  
 John Papenhausen\*  
 William Parkman  
 Duane & Ruth Perry\*  
 Judson T. and Virginia C. Pierson Trust  
 Everett Piester\*  
 Jane Price

J. Ronald Regnier\*  
 Charles Reid\*  
 Charles Reid, II\*  
 Gertrude B Reitemeyer\*  
 John Reitemeyer\*  
 Frank J. Reynolds Trust  
 Henry J. B. Rice\*  
 Donald P. & Jane Richter\*  
 Helen Roberts\*  
 Henry Roberts\*  
 Lissa Robinovitz  
 Antonio Rodriguez  
 Lewis P. Roraback Trust  
 Etta M. Rose\*  
 Rebecca C. Rose\*  
 Samuel Roskin Trust  
 Etta Rowe\*  
 Peter & Betsy Russell\*  
 William C. Russell Trust  
 Nancy Ryszkiewicz  
 Robert F. Savard, Jr  
 Dr. James & Kathleen Sayre  
 Frances Schiede\*  
 Douglas Scott\*  
 Christopher C. Scranton  
 J. Hamilton Scranton\*  
 Michael & Susan Sherman  
 Fred Sloane\*  
 Arthur M. & Judy\* Snyder  
 Edward Snyder\*  
 Elizabeth Speer\*  
 Joseph Stackpole Trust  
 Raymond W. Stahl\*  
 Judith A. & John Stearns\*  
 Holly W. Stevenson\*  
 Nathaniel T. Stevenson Memorial Fund  
 George Stewart\*  
 Marvin Stocking\*  
 Samuel M. Stone\*

Donald & Janet Thatcher\*  
 The Clark Fund  
 The Gale Fund  
 The Geer Fund  
 The Jacobs Fund  
 The Mayflower Fund  
 The Porter Fund  
 Elmier Thienes\*  
 Orwell and Zama Tousley\*  
 Leonard M. Troub\*  
 Leigh VanEtten  
 Dennis Joe Voss\*  
 Ray & Sheryl Weaver  
 Thomas C. Weaver, Jr. Campership Fund  
 James B. Webber, III  
 Wells Fargo Corporate Trust Services  
 Richard Wenner  
 Frank & Bertha Wheeler\*  
 Joseph A. & Maureen White  
 Dr. David & Margaret Wilcox  
 Alfred & Helen Wilke  
 Jennie L. Williams\*  
 Ernest Williams\*  
 Fred Wirth\*  
 Charles W, Woerz\*  
 Bette & Thomas J.\* Wolff  
 Gary & Eileen Wolff  
 Charles Guilford Woodward\*  
 William and Edith Woolley\*  
 Jane and Harold B. Wright, Jr.\*  
 Mary Ellen Yankov Memorial Trust  
 E. Robert & June Zenke\*  
 Charles Zimmerman\*  
 James Zocco\*  
 \*Deceased



## Kids to Camp Golf Tournament

Raised over \$150,000

The Kids to Camp golf tournament supports the Y's ability to ensure that every child has the opportunity to attend summer camp regardless of financial circumstances. A Y camp experience is often life-changing and allows youth to explore the outdoors, be active, make new friends, build confidence, and develop leadership skills.

Presenting Sponsor:



Signature Sponsors:



Golf Ball Sponsor:

Webster Bank

Golf Cart Sponsor:

Tito's Handmade Vodka

Flag Sponsor:

Paier College

Eagle Sponsors:

Bartlett Brainard Eacott Inc.  
 Hartford Yard Goats  
 Horizon Technology Finance  
 Liberty Mutual Insurance  
 McCarter & English, LLP  
 Penn Lincoln Strategies  
 Precor  
 Quisenberry Arcari  
 Malik Architects /  
 BVH Integrated Services  
 Sifco, Inc.  
 The Hartford



## Healthy Kids Day

**Raised over \$50,000**

Healthy Kids Day provides an opportunity for children and families to come together at the Y to experience a free, fun-filled, family-centered day dedicated to youth. The goal of Healthy Kids Day is to inspire youth and families to make health, wellness, and safety a priority in their lives.

### Gold Sponsors:



### Silver Sponsor:

The Hartford



The YMCA of Greater Hartford thanks its generous donors who supported the Y's Annual Campaign, branch special events, endowment, and mission-based programs and services in 2022.

The YMCA 1852 Society consists of special friends of the YMCA who supported it with a gift of \$2,500 or more. The YMCA 1852 Society derives its name from the year of the birth of the YMCA services in Hartford. The YMCA of Greater Hartford is the fourth oldest YMCA in the United States. The generous gifts from members of the 1852 Society allow the YMCA to continue its important work throughout our region.

### 1852 Society DIAMOND (\$25,000 & above)

Beagary Charitable Trust  
Best Buy Foundation  
City of Hartford  
Connecticut State Department of Education  
Gawlicki Family Foundation  
Betty Hale  
Hartford Foundation for Public Giving  
Lego Community Fund U.S.  
Norma & Natale Sestero Fund at the Hartford Foundation for Public Giving  
Joann & James Price  
SBM Charitable Foundation, Inc.  
Squadron Capital LLC  
State of Connecticut Department of Economic and Community Development  
The Hartford  
The REACH Foundation  
Travelers Foundation  
United Way of Central & Northeastern Connecticut  
YMCA of the USA

### 1852 Society PLATINUM (\$10,000 to \$24,999)

Dr. Linda S. Alexander  
Asylum Hill Congregational Church  
Toten Bacardi  
Stefanie Birkmann & Sunil Savkar  
Budd Family Fund at the Hartford Foundation for Public Giving  
Coca-Cola Beverages Northeast

Comcast  
Elizabeth M. Landon & Harriette M. Landon Charitable Fund  
Robert\* & Carole Goldberg  
Granby Community Fund Inc.  
Ruth & Richard Grobe  
Harvey & Manetta Family Fund  
Kimberly & Michael Hecht  
Katherine McLane & Henry McLane Charitable Trust  
Sandra Kuhach & Peter Axilrod  
Liberty Bank  
Liberty Bank Foundation  
NewAlliance Foundation  
Newell and Betty Hale Fund of the Greater Worcester Community Foundation  
Raytheon Technologies  
Vernon D. and Florence E. Roosa Family Foundation Memorial Fund at the Hartford Foundation for Public Giving  
TD Charitable Foundation  
Trinity Health Of New England  
Virtus Investment Partners  
VOYA Financial  
Wethersfield Public Schools  
White Mountains Capital, Inc.

### 1852 Society GOLD (\$5,000 to \$9,999)

Aetna Inc.  
Andrulat Charitable Foundation  
Beatrice Fox Auerbach Foundation at the Hartford Foundation for Public Giving  
BlackRock  
Burkentine Builders  
Brooks Campion  
Edward & Tracy Church  
Maura Cochran  
Mr. & Mrs. Stephen Delpapa  
Susan Durant  
Fairview Capital Partners, Inc.  
Betty Hale  
John Hart  
Hartford Hospital  
Ronald Johnson  
Paul Kelly  
MDRT Foundation  
Jocelyn & Dennis Mitchell  
Monaco Ford  
Paier College  
Carolyn Paldino  
Mark & Jennifer Plourde  
Putnam Area Foundation  
Arthur Snyder  
Joseph S. Stackpole Charitable Trust,  
Bank of America, N.A., Trustee  
Judith Stearns\*

Kevin Swan  
The Chase Kowalski Scholarship Fund  
The Children's Museum  
The Mathieu L. D'Amour Family Fund  
Titan Energy New England, Inc.  
Tito's Vodka  
Greg & Mary-Jo Toczydlowski  
Michael Tomasso  
Vernon Regional Adult Based Education  
Virginia Taft  
Waldo Photo  
Webster Bank  
Weiss, Hale & Zahansky Staff  
Westfield Bank  
WIN Waste Innovations  
Deborah Woodsome

### 1852 Society SILVER (\$2,500 to \$4,999)

Alexander & Catherine Maus Wright Charitable Trust  
Associated Security Corporation  
Andrew Bachman  
Heidi & Robert Bailey  
Beth & Steven Ballentine  
Bartlett Brainard Eacott Inc.  
Diane Belcher  
Patricia Brewer  
Sara Buell  
Richard Burness  
John Byrnes  
Clio DH Axilrod Foundation  
Centreville Bank  
CMAK Sandy Hook Memorial Foundation  
Eric Coleman  
Command Corp.  
CWPM  
Marcy Dandurand  
Daxko  
Day Kimball Healthcare  
Jason Fazio  
Fiducient Advisors  
Matthew Gedansky  
Goodwin University Inc.  
Laurence Hale  
Hartford Yard Goats  
Bryan & Caitlin Hitchcock  
Horizon Technology Finance  
HomeSpring Inn & Studios  
Jason Levesque  
Kevin Lewis  
Liberty Mutual Insurance  
Life Fitness  
Lincoln Financial Foundation, Inc.  
Matrix Fitness Systems

McCarter & English, LLP  
Timothy McGrath  
Evan McHugh  
Frank Monterio  
Annie Moore  
Patricia Morgan  
Douglas Nakashima & Kate Manchester  
Old Guard, Inc.  
Penn Lincoln  
Scott & Norma-Jean Posocco  
Precor Incorporated  
Thomas Rechen  
Jack & Susan Ross  
Rotary Club of East Hartford  
Eric & Kristin Santini  
Richard Shima  
Sifco, Inc.  
South Windsor Community Fund at the Hartford Foundation for Public Giving  
Harold Sparrow  
Michael & Carrie Stockman  
Streamline Aquatics  
Kevin Tabellione  
The Raney Family Fund  
Paul Travaglino  
Patrick Consedine  
ValMark Financial Group Global Gift Fund  
David & Margaret Wilcox  
Gary Wolff  
Melissa & James Zahansky  
Scott Zuffelato

### CHAIRMAN'S CIRCLE (\$1,000 to \$2,499)

Susan Andersen  
Peter Anderson  
AssuredPartners  
Peter Atherton  
Meredith Bartholomay  
Bartlett Law LLC  
Elisa Bartlett  
Chelsea Baum  
Christopher Becke  
Alit Bedik  
William Belcher  
Paul Berkel  
Body by Design  
Tom & Kathy Borner  
Eric Brown  
Theodore Bruttomesso  
Kathleen Bryson  
Harold Buckingham\*  
Burlington Construction Co., Inc.  
BVH Integrated Services  
Camilliere & Cloud  
Jeff Caplow

Dan Cargill  
John Carty  
Joanne Cascione Zelko  
Joseph & Lorraine Cascione  
Vince Castagno  
Sarah Chow  
Eric & Heidi Clapprood  
Clear Automotive Group  
Alexandra Clermont  
CMRK, Inc  
Code Ninjas  
Kimberly Cole  
Collinsville Bank  
Community Renewal Fund, Inc.  
Congregational Church of South Glastonbury  
Connecticut Bankers Association  
Connecticut Physical Therapy Specialists LLC  
David Corricelli  
Rodger & Jennifer Coyne  
CT Automotive Retailers Association Foundation/GHADA  
CT Realty Trust  
Richard Cyphers  
Dalene Hardwood Flooring Co., Inc.  
Davis Waner Philanthropy Fund  
Craig Dawson  
Jocelyn & Greg Denalsky  
James Doran  
Duncaster  
Sean & Karen Dwyer  
Quentin & Barbara Eastman  
Bernadeta Eichner  
Doug Eldridge  
Jane Emerson  
Jenny Emery  
Melissa Emmendorfer  
David & Mary England, Jr.  
Ensign-Bickford Aerospace & Defense  
George & Laura Estes  
Russell Everett  
Roy & Risa Filkoff  
Laura Floyd  
Bryan Forst  
Gary Forster  
Franciscan Center for Urban Ministry  
Robert & Christine Frederick  
FRESH - Woodstock Academy  
Gina Gaipa  
Jerald & Linda Gooden  
Carey Greene  
Griffin Electrical Contractors  
Linda & Andrew Groher  
Anthony Gronski  
Joli Gross  
Cora Hall  
Kathryn Hanson

Anthony Harrington  
 John & Cathy Healy  
 Henry & Gerety, Inc. Builders  
 Hewlett Packard  
 Enterprise Foundation  
 Linette Hill  
 David Hitchcock  
 Robert Hoffman  
 Suzanne Hopgood  
 Neil Hoss  
 Lloyd Huie  
 Judith Huntington  
 Gary & Elizabeth Jachym  
 S. Edward Jeter  
 Bruce Johnson  
 Susan & Mark Joyse  
 Philip Kane Jr.  
 Gary Kanter & Kelly Lynch  
 Evelyn Karaj  
 Devesh Karandikar  
 John Keleher  
 Amanda Kelly  
 Francis & Diane Kelly  
 Heath & Holly Kidd  
 Sarah Kimball & Keri Watkins  
 Linda Knox  
 Chelen Kost  
 L.E. Whitford Co., Inc.  
 Annette Larabee  
 Greg Latz  
 Law Offices of Kerry A Socha, LLC  
 Law Offices of Ronald S Johnson  
 Frank Leone  
 Coleman Levy  
 Brian & Chris Liss  
 Mary Little  
 Live Every Day LLC  
 Kurt Malec & Justin Scheidegger  
 Michael McGlamery  
 Warren McGrath  
 Marisa McMahan  
 Cynthia McNamar  
 McNeely Foundation Inc.  
 MeadowBrook of Granby  
 Melissa Joy Molin Memorial Fund  
 Paul & Ann Mikkelson  
 Anindita Mohanty  
 Joseph & Chrissy Monaco DiMauro  
 Tom Mongellow  
 Lucille Mulroy  
 Keith Murphy  
 Murphy, Laudati, Kiel & Rattigan, LLC  
 Naismith Memorial Basketball Hall of Fame  
 Peter Olson

Borden Painter  
 William Parkman  
 Paul Family Charitable Fund  
 Martin Payton  
 Bruce Perry  
 William Peterson  
 Petit Family Foundation  
 William Petit, Jr.  
 William Petit, Sr.  
 Physical Therapy and Sports Medicine Centers  
 PhysicianOne Urgent Care  
 Pinnacle Maintenance, LLC  
 Charlotte Politis  
 Laura Prisco  
 Prudential Foundation  
 Putnam Plastics  
 Quisenberry Arcari Malik Architects  
 Timothy John Restall Jr.  
 Riverside Health & Rehabilitation  
 Robinson+Cole  
 Judy Rzucidlo  
 David Schupp  
 Dr. Jamison Scotto-Connecticut Periodontal & Implant Associates  
 Linda Knox  
 Seabury  
 Doug Semenuk  
 Elke Sgarlata  
 Michael & Susan Sherman  
 Nelson & Helen Sly  
 Jeremy Smith  
 Philip & Linda Smith  
 Thomas Snyder  
 Stafford Mechanical Services, Inc.  
 David & Heather Stavens  
 Robert Stearns  
 Joel & Amy Steinman  
 Julia Switzer  
 Kevin Tabellione, CFP  
 Kathleen Taylor  
 Mark & Debby Teed  
 The Hospital of Central CT  
 The Maltese Family  
 The Robin and Bill Grace Charitable Family Fund  
 Brian Thibeault  
 James and Eileen Thomas  
 Tivity Health  
 Town Fair Tire Foundation, Inc.  
 Town of Norfolk  
 Daniel Tracy  
 Thomas & Dianne Trueb  
 Vistra Energy  
 Craig Voorhees  
 Kevin Washington  
 Joseph & Jennifer Weiner  
 Joseph Weist  
 Werth Family Foundation

West Hartford Exchange Club  
 Foundation, Inc.  
 David Westcott  
 Whittlesey  
 Alfred & Helen Wilke  
 Willad Family Fund  
 William & Ellen E Macristy Foundation  
 John Wright  
 Vernon Young  
 David & Sabine Zell

**PRESIDENT'S CLUB (\$500 to \$999)**

Jonathan Abels  
 Irma Allegretti  
 Almost Famous Brewing  
 Jerome Alper  
 Merlin Alper  
 Laquita Ames  
 Antonucci Electric  
 Julianne Avallone  
 Ed & Nancy Bader  
 Bank of America Charitable Foundation  
 Barron, Yanaros, & Caruso, PC  
 Rebecca Barton  
 Stanley Battle  
 Ruth Bernadt  
 Charles Berry  
 James Betts  
 BG Consulting Services, LLC  
 Boccaccio Family Trust at the Hartford Foundation for Public Giving  
 Bosco's Garden Center, LLC  
 Glenn Brand  
 James Brawley & Jill Hartley  
 Alexandra Brez  
 Alan Budkofsky  
 Erik Burmeister  
 Maureen Buyak  
 Joseph Carlson  
 Kathleen Cattanach  
 Central CT Lawn Service  
 Susan Chatfield  
 Ronald Coderre  
 Elizabeth Cogan  
 Coldwell Banker Realty Cares Foundation  
 Community Foundation of Greater New Britain, Inc.  
 Connecticut Valley Orthodontics  
 Walter Cormier  
 Linda Coveney  
 Eric Crawford  
 Katherine Crowley  
 CT Custom Aquatics  
 CVS Health  
 Jennifer Daly  
 Wendy D'Angelo

Richard Darrow  
 Gregg Davis  
 Jeffrey Davis  
 Elizabeth Dexheimer  
 Rob Dietrich  
 Janet DiTarando  
 Matthew Doak  
 Dolan Dental Group  
 Susan Dorenbosch  
 Kathryn Dube  
 Dunkin Donuts  
 Thaddeus Endriga  
 Eagle Rivet Roof Service Corporation  
 Rebecca Earl  
 East Granby Motors  
 East Hartford Lions Foundation  
 Andrew Elkin  
 Todd Emery  
 Robb Engel  
 Thomas Everson  
 Ericka Fangiullo  
 Ronald Felix  
 Fred Fioriello  
 Teresa Fogel  
 Four Dad's Pub  
 Ned Furtney  
 John & Pamela Gambarotta  
 Giovanni's Brick Oven Pizzeria  
 Robert & Susan Glasspiegel  
 Glastonbury Hills Country Club  
 Glastonbury Rotary Club, Inc  
 Jennifer Glick  
 Keith Gnazzo  
 Jodi Gove  
 Granby Chapter of UNICO  
 Granby Dental Center, LLC  
 Robert Greene  
 Gail Gretzmacher  
 Josslyn Grindle  
 Mary & Guy Grube  
 Nick Guenther  
 Michael Gustafson  
 Hair Today  
 Timcia Hall  
 Hanover Insurance Group  
 Lynn Harrison  
 John & Kelly Hartman Foundation  
 Ross Hollander  
 Hartford HealthCare  
 Paula Healey  
 Justin Hicks  
 Michael Hopkins  
 Brandon HuBrins  
 Tanya & Christopher Hug  
 Illinois Tool Works Foundation  
 International Skating Center of CT

David & Kim Isabelle  
 Susan Janton  
 Divanny Jaramillo  
 Wenyan Jiang  
 Kenneth & Christine Jones  
 Justin Kababik  
 Lawrence Kiel  
 Treena King  
 Susan Klock  
 Knox Inc  
 Claire LaMonica  
 Daniel LeBlanc  
 Heather LeBlanc  
 Lynn Leblanc  
 Thomas Lincoln  
 Linemaster Switch Corporation  
 Carter Lonsberry  
 Loos & Co  
 Macri Associates, Inc.  
 Kathleen Madden  
 Frank Manna  
 Margaret Wilcox & Associates  
 George McGauley, Jr.  
 Michael McGuinness  
 Catherine McIlveen  
 Peter Stevens  
 Margaret Strange  
 Bob Swanson  
 Traci Tefft  
 Jason Terrell  
 Lindsay Tessler  
 The Rooney Swanson Group  
 Katie Thibault  
 Todd Thomas  
 Patricia Thorstenson  
 Three-Way Communications, Inc  
 Togetherwork Holdings LLC  
 UnitedHealth Group  
 US Bank  
 Valvoline Instant Oil Change  
 Ronald Van Winkle  
 James Vetrano  
 Village Cork and Keg  
 Lenora Waelti  
 Walsh Woodard LLC  
 WeBuyGymEquipment LLC  
 Craig Weinstein  
 Windsor Federal Savings and Loan  
 Scott & Elizabeth Woodaman  
 Woodstock Building Associates  
 Bruce Wright  
 Natalie Zembrzusi  
 Zen Restaurant Group, LLC  
 Craig Zimmerman  
 Michael Zubretsky

Kathie Reese  
 Jane Reik  
 Charles Roberts  
 Ariel Robinson  
 Christine Robinson  
 Rogin Nassau LLC  
 Rotary Club of Rockville  
 Andrew Roy  
 Edward & Nancy Ryszkiewicz  
 Sandeep Saini  
 William Saunders  
 Susan Seid  
 Margaret Sexton  
 Stacia Shaw  
 Everett Shepard  
 Sheptoff, Reuber & Co PC  
 Prashanie Silva  
 Linda Torres  
 Skips Wasterwater Services  
 Dennis Snelling  
 Jeffrey Spadaccini  
 Spirol International  
 Starling Physicians  
 David Stavens  
 Peter Stevens  
 Margaret Strange  
 Bob Swanson  
 Traci Tefft  
 Jason Terrell  
 Lindsay Tessler  
 The Rooney Swanson Group  
 Katie Thibault  
 Todd Thomas  
 Patricia Thorstenson  
 Three-Way Communications, Inc  
 Togetherwork Holdings LLC  
 UnitedHealth Group  
 US Bank  
 Valvoline Instant Oil Change  
 Ronald Van Winkle  
 James Vetrano  
 Village Cork and Keg  
 Lenora Waelti  
 Walsh Woodard LLC  
 WeBuyGymEquipment LLC  
 Craig Weinstein  
 Windsor Federal Savings and Loan  
 Scott & Elizabeth Woodaman  
 Woodstock Building Associates  
 Bruce Wright  
 Natalie Zembrzusi  
 Zen Restaurant Group, LLC  
 Craig Zimmerman  
 Michael Zubretsky

**PATRON OF YOUTH (\$250 to \$499)**

Kendra Adachi  
 Marjory Alabre  
 Amica Companies Foundation  
 Mike & Karen Antonucci  
 Arnold & Mary Carlson Fund at the Hartford Foundation for Public Giving  
 Arrow Concrete Products, Inc.  
 Bernard Aronson  
 Association of Black Sports Officials  
 Karen Bachman  
 Christian Baer  
 Bailey Funeral Home  
 Battelle  
 Andy Bauer  
 Beman Hardware  
 Lisa Benson  
 Joseph Berkel  
 Best Wine Shop in Town  
 Timothy Bethea  
 Lindy Bigliuzzi  
 Tracey Bissell  
 Michael Bocchini  
 Michael Bocchini  
 Stanley Bojanowski  
 Jeremy Breen  
 Sarah Brevick  
 Jeff Brooks  
 Jessica Dowdell Brown  
 Marc Brunetti  
 Robert Bruzas  
 Christopher Buell  
 Vicky Bullock  
 Erik & Alisa Burmeister  
 Susan Calaman  
 CAM Industries  
 Capital Studio Architects, LLC  
 Abby Carboneau  
 Laura Carl  
 Randa Carr  
 Harry Carrel  
 Marissa Casarella  
 Lori Cascione  
 Cindy Caskey  
 John Cattelani  
 Jamie Chacho  
 Andrew Chapman  
 Christ Church of Pomfret  
 Robert Cleary  
 Connecticut Children's Medical Center  
 Burton Guion  
 Philip Gustafson  
 Sean Hadden  
 Charles Halapin  
 Elwyn Harp  
 Jen Cooper  
 Costello Landscaping  
 Katherine Cunningham

Ronald & Lorraine Daigle  
 Olivia D'Ambrosio  
 John D'Arco  
 Florence Davis  
 Martha Delaney  
 Ken DeLorenzo  
 Thomas Dimartino  
 Mark Dixon  
 Judy Dooley  
 Ronald Dorsey  
 Carmela Doucette  
 Chris Dowd  
 Richard Dudenhofer  
 Val Dumais  
 John Earnhardt  
 Eastern Connecticut Health Network, Inc. (ECHN)  
 Susan Emond  
 Doreen Endress  
 Leyna Erickson  
 Evans Automotive LLC  
 Farm Credit East  
 Leia Faucher  
 Christopher & Nancy Ferace  
 J. Michael Fiala  
 Fiberoptics Technology  
 Finex Credit Union  
 Sandra Fischer & William Madsen



Urania Hatzisavvas  
 Pamela Hayes  
 Shaun Heffernan  
 Kathleen Heneghan  
 Robert Herr  
 Darrell Hill  
 Jocelyn Hillard  
 Kathleen Hirsch  
 Deborah Hitchcock  
 Holloway's Appliance, LLC  
 Regina Hopkins  
 Choong How  
 Heidi & Mike Hribernik  
 Kevin Hughes  
 Infoshred, LLC  
 Shiji Isaac  
 Gary Jachym  
 Jainchill & Beckert LLC, Attorneys at Law  
 Ivo Jaquez  
 Joe & Courtney Jinjinka  
 Courtney Jinjinka  
 Juliano's Pools, L.L.C.  
 Jason Jury  
 Tom Karpechik  
 Sarah Karstaedt  
 Susan Katz  
 Keiser Corp  
 Sean Hadden  
 Charles Halapin  
 Elwyn Harp  
 Jen Cooper  
 Costello Landscaping  
 Katherine Cunningham

Bruce Kloter  
 Perry Koste  
 Kyle Kramer  
 Timothy & Debra Lenihan  
 Levit & Fixt  
 Nicholas Liguori  
 Jennifer Lindstorm  
 Kathleen Lombardi  
 Tracie Lombardy  
 James & Gayle Looby  
 The Looney Family  
 Lost Acres Vineyard  
 Lussier Ventures, INC.  
 Justin Lutin  
 Kelly Lyman  
 Cynthia Mackay  
 James Mahon  
 Lynn Malec  
 Anne Malone  
 Stephen Manning  
 Joe & Courtney Jinjinka  
 Christopher Marchand  
 Matthew D. Scoll Giving Fund  
 Patrick McCarthy  
 Jennifer McCormick  
 Erica McCullough  
 Richard McGeary  
 Susan McGuire  
 Holly McIntyre  
 Sharon McKinstry  
 David Mcquade  
 Nick Merritt  
 Ken Michonski

Cary Miles  
 Scott Miller  
 James Milne  
 Dr. Frederick Moffa  
 Jim Mongellow  
 Hoda Mousa  
 Nathan Mumford  
 Kathleen Lombardi  
 Tracie Lombardy  
 James & Gayle Looby  
 The Looney Family  
 Lost Acres Vineyard  
 Lussier Ventures, INC.  
 Justin Lutin  
 Kelly Lyman  
 Cynthia Mackay  
 James Mahon  
 Lynn Malec  
 Anne Malone  
 Stephen Manning  
 Joe & Courtney Jinjinka  
 Christopher Marchand  
 Matthew D. Scoll Giving Fund  
 Patrick McCarthy  
 Jennifer McCormick  
 Erica McCullough  
 Richard McGeary  
 Susan McGuire  
 Holly McIntyre  
 Sharon McKinstry  
 David Mcquade  
 Nick Merritt  
 Ken Michonski

Irene Quong Conlon  
 Sarah Ralston  
 Michelle Rawcliffe  
 Lisa Reinhardt  
 Anne Resnik  
 Hannah Richardson  
 Dale Richter  
 Carol Roberts  
 Lisa Roche  
 Mark & Sheri Rogers  
 Kenneth Rohde & Martha Ritter  
 Kelly Rome  
 Earl Rosebrooks  
 Norman Ross  
 Rotary Club of Simsbury, CT, Inc.  
 Bernice Roy  
 RPC Associates, LLC  
 Jan Ruderman  
 Susan Sack  
 Jodi Salmon  
 Theo Paradis  
 Judith Satlof  
 Mimi Satter  
 Sharon Schmidt  
 Steve, Ben, & Aaron Schneider  
 Mary Schone  
 Eric Schulman  
 Ronny Segura  
 Najee Selimaj  
 Joe Sepot  
 Mohammed Shams  
 Shutterfly LLC

Steven Silva, Estate Inspection Group  
 Simsbury Board and Brush  
 Anna & Danny Smith  
 Bryan Smith  
 James & Linda Snyder  
 Soccer and Beyond  
 Richard Solomon  
 Amy Souchuns  
 South Congregational Church of East Hartford  
 Peter Spinelli  
 Stanley Wiesen, Inc./SWI Glass & Metal  
 Erin Stavens  
 Neve Stearns  
 Harold Sterrett  
 Matthew Stiebel  
 Nancy Storms  
 Sullivan & Leshane Public Relations  
 Cindy & David Sullivan  
 Roger Sundin Jr.  
 Sunnstone Construction Services LLC  
 Terri Swanson  
 Kelly Sweeney  
 The Ivy at Ellington  
 The Redd Flowers Foundation  
 Coreen Thompson  
 Harris Thompson  
 Sarah & Spencer Thrall  
 Liz Tracy  
 Bonnie Hennig-Trestman  
 Julie Tse  
 UKG  
 Vivo Chiropractic Vernon, LLC.  
 Michael Vrtis  
 Katherine Wagar  
 Jeff and Karen Walker  
 Keri Watkins  
 Kate Weaver  
 Mary Weaver  
 Cari Webber  
 James Weiss  
 Chris & Kathleen Weitz  
 Emily & Jon Welch  
 Gregory Weller  
 Michael Wessell  
 Joseph White  
 Susan Wilde  
 Jeffrey Williams  
 Valencia Williams  
 Stacey Willis  
 George & Maureen Woods  
 Wright-Pierce  
 Gerald Yates  
 Zachs Family Foundation

**CENTURY CLUB (\$100 to \$249)**  
 1st American Home Loans LLC  
 Nancy Adams  
 Carren Adler  
 Rafiq Al-Fareed  
 Elmar Alikhanov  
 Robyn Alper  
 Benjamin Alper  
 Rebecca Alper  
 Zach Alper  
 Christopher Alvarado  
 Heather Andersen  
 Carolyn Anderson  
 Elaine Anderson  
 Steve Andrea  
 Dr. Lawrence Andrus  
 Laura Annuzzi  
 John & Pat Apelgren  
 Marc Archambault  
 Judi Arnold  
 Margaret Arnold  
 Stephen Aronson  
 Jay Aronson  
 Noah Aronson  
 Cat Arsenaault  
 Judy Arth  
 Attorney Stephen J. Adams  
 Angela Atwater  
 Arthur & Mary Aubin  
 Nick Avise  
 Back and Body Chiropractic LLC  
 Patient Donations  
 Kelly Bailey  
 Megan Baker  
 Shawnee Baldwin  
 Beth Baron  
 Frank Barrett  
 Hope Barton  
 Dina Bates  
 Kathy Batlle  
 Patricia Batsie  
 Anita Battle  
 Jayne Batty  
 Angela Baugh  
 Michael Baum  
 Denise Baum  
 Alicia Baver  
 Dan Beam  
 Nicholas Beams  
 Nancy Beaudoin  
 Keith Beaulieu  
 Suzann Beckett  
 Joanne Beers  
 Suzanne & Steven Behrens  
 Bernard Beiner  
 Janice Belfiore  
 Ronald Beliveau  
 Martin Benjamin

Stephen Benson  
 Barbara Berger  
 Buzz & Linda Berger  
 Steve Berian  
 Martin Berman  
 Robert Bethea  
 Susan Bidwell  
 Cara Biega  
 Joseph Bierbaum  
 Big Y Foods, Inc.  
 Bill's Bread and Breakfast  
 Ryan Bingham  
 Don & Alexis Bisplinghoff  
 Tony Bivona  
 Syd & Nancy Blodgett  
 Seymour Bloom  
 Steve Blovish  
 Edward Boiczuk  
 Nick & Holly Bolduc  
 Peggy Bologna  
 Ann Bonney  
 Salli-Jo Borden  
 Amber Borst  
 Arthur & Charlotte Bradbury  
 Leanna Bran  
 William Bray  
 Patricia Breault  
 Heinz Brennwald  
 Camilla Brett  
 Jill Bright  
 Elaine Brink  
 Brittney Gondek Design, LLC  
 Wendy Brody  
 David Brower  
 Francis Brown  
 Marge Brown  
 Thomas Hawrylik & Erin Buckmiller  
 Vincent Bullock  
 Lisa Burch  
 Sharon Busch  
 The Bush Family  
 Benjamin & Kimberly Butler  
 Jayne Batty  
 Angela Baugh  
 Michael Baum  
 Denise Baum  
 Alicia Baver  
 Dan Beam  
 Nicholas Beams  
 Nancy Beaudoin  
 Keith Beaulieu  
 Suzann Beckett  
 Joanne Beers  
 Suzanne & Steven Behrens  
 Bernard Beiner  
 Janice Belfiore  
 Ronald Beliveau  
 Martin Benjamin



Rachel Case  
 Linda & Doug Casey  
 Ben Castonguay  
 Cheryl Chacho  
 Charter Oak Toastmasters  
 Alphonso Cheatem  
 Nicolas Simon & Miriam Chirico  
 Leslie Chodnowsky  
 Krista Clark  
 Philip Clark  
 Rachel Clark  
 Mather Clarke  
 Christopher Cloud  
 Miles Cochran, Jr.  
 Stacie Coderre  
 Carole Cohen  
 Joshua Coiro  
 Mary Collins  
 Pamela Colloff  
 Winnifred Comfort  
 Wendy Conlon  
 Cop & Go Boutique  
 Nora & Theodore Cornforth  
 Barbara & Ken Coscia  
 Grant Coscia  
 Mavourneen Costello  
 Audrey Creely  
 Gary Carter  
 Helene Crispino  
 H. David Crombie, MD  
 Maura Cronin  
 Ruth Cruz

Neal Cunningham  
 Anne-Marie Curtis  
 Eileen Cyr  
 Donelle Daigle  
 Christopher Dalene  
 Jennifer Danis  
 Michael Dannehy  
 Adrienne Davis  
 Alyson Davis  
 Destiny Davis  
 Liz Dearden  
 William Degan  
 Debra Delane  
 Jason Depatie  
 Joe DeSimone  
 Molly Devanney  
 Peter & Jackie Devittorio  
 Paula Diener  
 Gary & Joann Dinda  
 Sara Dilorio  
 Chris Dipollina  
 Laura Dipollina  
 David Monaco  
 Mishone Donelson  
 Susan Doran  
 Joahn Dowling  
 Mark Dowling  
 Seth Driggin  
 Thomas Driscoll  
 Donna Dubaldo  
 Cynthia Dudjoc

Susan Dumais  
 Alexander Dumont  
 David Duncan  
 Gerald Dwyer  
 DZ Landscaping  
 East Hartford Women's Club  
 Ward Edgerton  
 Eichner Real Estate INC  
 Jean Eichner  
 Steve Elbaum  
 Shayna Ellovich  
 Gary Ellrod  
 Melissa Emmendorfer  
 Edward Englehardt Jr.  
 Candace Englert  
 Seth Epstein  
 Michele Erling  
 Michael Fabro  
 Jay Faherty  
 Aaron Falibrio  
 Jennifer Farina  
 Thomas Farquhar  
 Terina Fay  
 Amanda Feliciano  
 Anna Fenton-Hathaway  
 Phil Ferrari  
 Fidelity Charitable Gift Fund  
 First Congregational Church of East Hartford  
 Cassidy Flanagan  
 Matt Fleury

Erin Fox  
 Marlene & Michael Frechette  
 Allen Friedrich  
 Mary Fuller  
 Roger & Nancy Gale  
 Ira & Carol Garber  
 Maria Garcia Bulkley  
 Linda Garcia  
 Garden Gate Florist  
 Susan Garten  
 Gartner, Inc  
 Marty Gaudrault  
 Brian Gauthier  
 Jennifer Gaze  
 Conor Geary  
 Diana Geisser  
 Roberta Geisser  
 Katherine Gelman  
 Andy Gerardi  
 Justin Giampaolo  
 Danielle & Steve Giamundo  
 Amy Gibbs  
 Patrick Gilland  
 Paul & Marion Gilmore  
 Sean Glasgow  
 Glastonbury Oil Company  
 Diana Goode  
 Suzanne Gottshall  
 Michael Graf  
 Granger Construction  
 Christopher & Dorothy Greene  
 Sonia Greene  
 Kristina Gregory  
 Jody Gridley  
 Kenneth Griffin  
 Sara Grigely  
 Gregory Jones  
 Jeremy Jones  
 Kevin Jones  
 Thomas Jones  
 Arjun Jothikrishnan  
 Kaoud Rug & Carpet  
 Copeland Kapp  
 Dennis & Marie Looney  
 Susan Looney  
 Ann Lopes  
 Edward Lord III  
 Tina Lorentzen  
 Linda Lucas  
 Garrett Ludwig  
 John Luginbuhl  
 Amy Lutz  
 Deborah Lynch  
 Ginger & Tom Lynch  
 Marcella Macdonald  
 Melissa Machado  
 Della Macomber  
 Bill & Carol Madore  
 Neil Malkin  
 Andrea Maltese

John Hennessey  
 Margaret Hern  
 William Higgins  
 Shamain Hilliard  
 Caitlin Hitchcock  
 Renata Hoddinott  
 Eric Hoffman  
 Joanne Holcombe  
 Leslie Holland  
 Deborah Honegan  
 Joan & Denny Hopper  
 Michelle Horvath  
 Flora Houle  
 Donald Huber  
 Linda Hudson  
 McKenzie Hudson  
 Barbara Huff  
 Christine Hunt  
 Lynda Hunt  
 Karyn Hurlbert  
 Jeff Hyde  
 Drew Iacovazzi  
 Indeed  
 William Ingram  
 Wally Ivers  
 Taka Iwashita  
 Amy Jakowski  
 Nikki Jaworska  
 Katy Jenkins  
 Loren Jenkins  
 David Jepson  
 John Jepson  
 Brandy Johnson  
 Britta Johnson  
 Jeanne Johnson  
 Jim Johnson  
 Gregory Jones  
 Jeremy Jones  
 Kevin Jones  
 Thomas Jones  
 Arjun Jothikrishnan  
 Kaoud Rug & Carpet  
 Copeland Kapp  
 Dennis & Marie Looney  
 Susan Looney  
 Ann Lopes  
 Edward Lord III  
 Tina Lorentzen  
 Linda Lucas  
 Garrett Ludwig  
 John Luginbuhl  
 Amy Lutz  
 Deborah Lynch  
 Ginger & Tom Lynch  
 Marcella Macdonald  
 Melissa Machado  
 Della Macomber  
 Bill & Carol Madore  
 Neil Malkin  
 Andrea Maltese

Janice Klein  
 Eva Klinger  
 Karyn Kloter  
 Angela Koehnke  
 Dave & Cindy Koontz  
 The Koss Family  
 Michael Krawczyk  
 John Krouskoff  
 Andres & Mirje Kukk  
 Rachel Kushel  
 Claire LaBelle  
 Sandra & Jack Labranch  
 Sarah Ladd  
 Elizabeth Mattern  
 Glenn Mauldin  
 Maryann Mazzone  
 Clea McClellan  
 Chad McDaniel  
 Deborah McFall  
 Jackie McGee  
 Rich MCGirr  
 Kimberly Lawrence  
 Mary Jane Lawton  
 Gary Lebeau  
 Joseph Lebovitz  
 Amelia Leib  
 Dominique Lemoine  
 John Leonard  
 Elizabeth Leong  
 Byron Lester  
 Jay Levin  
 Steven Levin  
 Jay Lichtmann & Susan Treadway  
 Lifetouch School Studios  
 Jill Liguori  
 Susan & William Lilley  
 Barbara & David Linnard  
 Peter Linnard  
 Jason Litsky  
 David & Deirdre Lloyd  
 Karen & Reed Lloyd  
 Dennis & Marie Looney  
 Susan Looney  
 Ann Lopes  
 Edward Lord III  
 Tina Lorentzen  
 Linda Lucas  
 Garrett Ludwig  
 John Luginbuhl  
 Amy Lutz  
 Deborah Lynch  
 Ginger & Tom Lynch  
 Marcella Macdonald  
 Melissa Machado  
 Della Macomber  
 Bill & Carol Madore  
 Neil Malkin  
 Andrea Maltese

William Mancoll  
 Patricia & Gerald Manion  
 Maple View Farm  
 Marcella Marchand  
 Jean Mari  
 Sandra Markey  
 Wendy Marran  
 Brian Carvell  
 Anthony Martucci  
 Thomas Mason  
 Aaron Masthay  
 Michael Mastromonaco  
 Sarah Ladd  
 Elizabeth Mattern  
 Glenn Mauldin  
 Maryann Mazzone  
 Clea McClellan  
 Chad McDaniel  
 Deborah McFall  
 Jackie McGee  
 Rich MCGirr  
 Kimberly Lawrence  
 Mary Jane Lawton  
 Gary Lebeau  
 Joseph Lebovitz  
 Amelia Leib  
 Dominique Lemoine  
 John Leonard  
 Elizabeth Leong  
 Byron Lester  
 Jay Levin  
 Steven Levin  
 Jay Lichtmann & Susan Treadway  
 Lifetouch School Studios  
 Jill Liguori  
 Susan & William Lilley  
 Barbara & David Linnard  
 Peter Linnard  
 Jason Litsky  
 David & Deirdre Lloyd  
 Karen & Reed Lloyd  
 Dennis & Marie Looney  
 Susan Looney  
 Ann Lopes  
 Edward Lord III  
 Tina Lorentzen  
 Linda Lucas  
 Garrett Ludwig  
 John Luginbuhl  
 Amy Lutz  
 Deborah Lynch  
 Ginger & Tom Lynch  
 Marcella Macdonald  
 Melissa Machado  
 Della Macomber  
 Bill & Carol Madore  
 Neil Malkin  
 Andrea Maltese

Amy Mullen  
 Brittany Mullen  
 Lindsay Mullen  
 Robert Mundy  
 Bruce Munshower  
 Jenna Murad  
 Elena Murphy  
 Wafaa Naggar  
 Ruth Napoleone  
 Megan Naughton  
 Jody Neaderland  
 Charlie Newell  
 Susan & Lucy Newman  
 Katherine Ng  
 Carol Noble  
 Cindy Noniewicz  
 Jane Norman  
 Phyllis Norton  
 Cynthia Nowlan  
 Jerry & Bonnie O'Brien  
 Bridget O'Brien  
 Michael O'Brien  
 Brendan O'Brien  
 Joseph Obuchowski  
 Susan O'Dea  
 David Okae  
 Olender's Body Shop, Inc.  
 Jackie Orlowski  
 Nastajha Ortiz  
 Lucia Osman  
 Alice Owens  
 Andrew Owens  
 Patrick Owens  
 John Panicek  
 David Panico  
 Mary & Achilles Pappano  
 Bob Parker  
 PartnerRe  
 Lindsay Paul  
 Carl & Alvyra Pavano  
 Martin Payton IV  
 Jonathon Peake  
 Simms Pearl  
 Shari Peloquin  
 Mary Perlini  
 Melissa Perlmutter  
 Chelsea Peters  
 Todd Peters  
 Peter Peterson  
 Robert Petrone  
 Megan Petsa  
 Karen Phelan  
 Kathleen Phillips  
 Kristin Piccini  
 John Pilla  
 David Pilon  
 Jill & Ken Pilon  
 John Pinone, Jr.

Anne Pinto  
 Katie Pitts  
 Amy Pivacek  
 Dennis Plevyak  
 Emily Plocharczyk  
 Rosaria Pock  
 Frank Polly  
 Benjamin Pomerantz  
 Marilyn Popick  
 Donna Powell  
 Wayne Prescott  
 Betsy Price  
 Linda Proctor  
 Joseph Prudente  
 Kenneth Przybysz  
 Bennett Pudlin  
 Candra Quetant  
 Charlie Radcliff  
 Richard Rae, Jr.  
 Vanessa Ramirez-Vollmar  
 Roy Raymond  
 Jane Reik  
 Donna Renouf  
 John Revay  
 Alan & Patricia Reynard  
 Joan Rhinesmith  
 Linda Rickard  
 Deidra & Harry Riggs  
 Lawrence Ring  
 Juan Rivera  
 Ricardo Rivera-Castro  
 Diane Roach  
 Breanna Robbins  
 Cally Robbins  
 Dale Roberson  
 Helen Roberts  
 The Rocheleau Family  
 Lena Rodriguez  
 Alissa Romano  
 Deborah Romanski  
 Cameron Rosa  
 Theodore Rose  
 Norman & Aileen Rosensweig  
 Mark Rosow  
 Ann Ross  
 Mike Ross  
 Werner Rosshirt  
 Joanne & David Russell  
 David Russell  
 Linda Russell  
 Jane Russo  
 Anne Sacco  
 Siobhan Sail  
 Christopher Sandford  
 Melody Santiago  
 Joseph Savarese  
 Pauline Schaefer



Jackie Scheidegger	Bill & Jane St. Onge
John Schleicher	Susan Stack
Bette Schubert	Brittany Stephenson
Amy Schulenburg	Paige Stern
Kevin Schultz	Tahlya Stevenson
Judith Schumacher	Gregory Stewart
Mary Scott	Molly Stiles
Sydney Scott	Lawrence Stillman
Jenna Scoville	Stone Family
Charmaine Seavy	Stop and Shop
Del Shilkret	Community Bag Program
Ben Sezer	Jim Storms
Kelsey Sgarlata	Allen Stout
Mark Shalhoub	Daniel Straffi
Satyapriya Sharma	Samuel Stuart
Hilary Shaw	Barbara Styrzczula
Katie Sherman	Dan Sullivan
Dawn Sherriff	Joan Summers
Dong Shin	Xuanhao Sun
Elizabeth Shluger	Charlene Swanson
Catrina Shubert	Erik Swenson
Mike Silingo	Joanna Sykes-Saavaedra
Adam Silverman	Daniel Tapper
Glenn Simone	Jesse Tauriac
Siri Wire	Erin Taylor
Eugene Skladnowski	Laine Taylor
Caroline Sloat	Dom Tedeschi
Jeffrey Small & Wendy Wolcott	Robin Thibault
Andrew Smith	Vicki Thibault
Barbara Smith	Gerald Thompson
Claire Smith	Kristy Tiner
David Smith	TJS Burritos
Muriel Smith	Rhonda Tobin
Wesly Smith	Angela Toomey
Kisha Snell	Jose Torres
Julie Snyder	Corina Torrey
Misty Solomon	Robin Tracy
Anita Speck	Anthony Traghese

Diana Trautwein
Daniel Trolio
Sara & Austin Trunick
Awet Tsegai
Dennis Tulimieri
Richard Twilley
Union Baptist Church
United Way of Coastal Fairfield County, Inc.
United Way of Southern Connecticut
Matthew Vaccaro
Carl Van der Zandt
Christopher Van Nostrand
Hannah Van Sickle
Stephanie Vanamee
Peter VanLoon
Patrick Vannelli
George Vaughn
Tom Veilleux

Alan Veniscosfsky Sr.
Darlene Vereneau
Vernon Police Union
Daniel & Delpha Very
Frank Virnelli
Stuart Wachtel
John Wadhams
Lori Wajer
Tom Watson
Gregory Weaver
David Webber
Jon Webber
Webster Banak Charitable Foundation
Eric Weil
Mr. & Mrs. Mitchell D Weiss
Chris Weitz
Barbara Welch
Bengt & Virginia Wennberg
Richard Werner
Vaughn Wesley
Sharon Wetmore
Sarah Whelan
Foster White
Diane Whitney
Jeffrey Wigodsky
Dana Wild
Stuart & Nuala Wiley
Ann Wilhelm
Rosemary Willett
Raymond Williams Jr
Brenda Williams
Kristy Tiner
David Williams
Richard Williams
Jordan Willis
Kris Willis
Katherine Wilson
Maia Wilson
Kristin Winbigler

Ana Wittig
Margaret Woisard
Mae Wolslegel
Stacie Woodaman
Michele Woz
David Wright
Jane Wright*
Kelly Wright
Deborah Wylie
William Wyrick
Kristen Xeller
Mary Yarmosky
Daeyong Yi
Candace Young
Darlene Young
Aurora Ziegwied
Charles Zoef
Zachary Zweifler

* Deceased
<b>Camp Jewell Capital Campaign<sup>+</sup></b>
The Alper Family
Arthur Eder Family Fund
Jennifer Bailit
John & Marla Byrnes
Camp Rising Sun
Shari Cantor
Jeff Caplow
Community Foundation of Western Massachusetts
John Foehl
Ruth & Richard Grobe
S. Edward Jeter
Susan & Mark Joyse
Joel Lerner
Charlotte Massie
Judith & Brewster Perkins
JoAnn & James Price
Raymond Ruddy
Urban Act Grant administered by the Connecticut Department of Energy & Environmental Protection
Judith A. Stearns*
Robert Stearns
Virginia J. Taft
James & Eileen Thomas
The David and Elaine Nord Family Fund
Paul Travaglino
Robert Wylie
YMCA of the USA
Yvette & Arthur Eder Charitable Foundation
The Zuffelato Family

<b>Camp Woodstock Capital Campaign<sup>+</sup></b>
Philip & Irma Allegretti
Andy Bauer
Diane Belcher
William Belcher
Lauren Bertolini & Family
Anne Bisenius
Linda P. and Theodore J. Bruttomesso, Jr.
John & Marla Byrnes
Dan & Kim Cargill
Cindy & Vince Castagno
Sarah Chow & Justin Perreault
Edward Church
Alex & Joe Clermont
Kathy Conroy
Marcus & Katy Dandurand
Richard Darrow
Craig Doucette
Rebecca Earl
Ron & Suzanne Felix
Risa & Roy Filkoff
Carl Fossum
Georgia's Homemade
Robin Silver Grace & Bill Grace
Carey & Judy* Greene
Christopher & Dorothy Greene
Ruth & Richard Grobe
Anthony & Melany Gronski
John & Cathy Healy
The Hersey Family
Bruce & Karen Johnson
Susan & Mark Joyse
Frank Lucchesi
Heather & Jeff LeBlanc
Pam (Gordon) Levin
Michael Lopes
The McGann Family
Michael McGlamery
Susannah McGlamery & Andrew Ranson
The McGrath Family
Robert Merritt & Susan Lennon
The Nash Family
Newell D. Hale Foundation
Newell & Betty Hale Fund of Greater Worcester Community Foundation
Osterman Propane, LLC
Carol "Ma" Parkman
William E. Parkman
Judith & Brewster Perkins
Anne Pickart
Paul & Christine Pinette
Betsy Pitt
Scott & Norma-Jean Posocco
John & Susan Preis
Jane Anderson Price

JoAnn & James Price
Michelle & Rob Rawcliffe
Mary Schone
Michael Sherman
Mike & Susan Sherman
Sadie & Matt Slootsky
Judy Jo* & Art Snyder
Tom & Tina Steen, John Steen, & Cynthia Steen Petti in memory of Bill Steen
Nora & Ted Steinhauser
Joel & Amy Steinman
Stephen Taylor
Al Thatcher
The Darald and Julie Libby Foundation
The Thibault-O'Beirne Family
Ellen Dix Thompson
Brandon Tucker
Lili Diorio Walker
Debbie Stein Waxler
Craig Weinstein
Bruce Weissgold
Ashley Whamond
YMCA of the USA
George & Tracy Zack
The Zuffelato Family

<sup>+</sup> Pledges of \$1,000 or more made to the Capital Campaigns as of 12/31/22.
We have made every effort to ensure the accuracy of these lists. We apologize if any error has been made. Please contact Susan Joyse, Chief Development Officer 860-595-3048, susan.joyse@gymca.org, to note any errors or omissions. Thank you.

**Our Mission**  
The YMCA of Greater Hartford is a charitable association open to all and committed to helping people develop their fullest potential in spirit, mind and body. This commitment is reinforced by our belief in living out the universal values of caring, honesty, respect and responsibility.

**Belong to Something Greater**  
Passionate about strengthening our communities by positively impacting the life of every person.

## The YMCA of Greater Hartford Summarized Financial Information for 2022

### Summary of Public Support, Revenues and Expenses

Public Support	
Contributions	3,187,373
United Way	8,333
Government Contracts & Grants	2,803,668

Total Public Support 5,999,374

Revenues	
Program Activities	13,723,825
Memberships	5,687,064
Merchandise Sales	361,618
Endowment allocation	1,803,930
Miscellaneous revenues	70,939

Total Revenue 21,647,376

Total public support and revenue 27,646,750

Expenses	
Salaries, taxes and benefits	15,695,581
Supplies and services	5,724,948
Utilities and occupancy	4,855,315
Promotion, vehicles and training	1,340,471
Other expenses	1,363,536

Total expenses 28,979,851

Subtotal Excess (deficit) (1,333,101)

Less: Depreciation and amortization 2,849,272

Net Excess (deficit) (4,182,373)

Forgiveness of Debt	4,959,973
Investment and non-operating activity-net	(14,445,991)
Capital campaign activity-net	1,073,179

Net change in assets (12,595,212)

### Summarized Balance Sheet

Assets	
Cash and equivalents	6,867,912
Investments	67,051,405
Receivables	2,414,264
Other assets	12,849,086
Land, Bldg, Equip - net	57,606,438
Trusts held by others	13,805,462

Total assets 160,594,567

Liabilities	
Payable and accrued expenses	2,153,525
Notes Payable and Line of credit	3,971,496
Deferred revenue	7,782,079
Other Liabilities	12,283,988
Bond payable	20,502,559

Total liabilities 46,693,647

Net Assets  
Total net assets 113,900,920

Total net assets and liabilities 160,594,567



### Constituency Report

Membership	
Different People Served	
Male	21,927
Female	22,751
Unknown	1,491
Youth	17,175
Adults	28,994
Total Members	33,532
Other Participants	27,118
Total Constituency	60,650

Personnel	
Employees Full Time	150
Employees Part Time	471
Seasonal	382

Supporters	
Fund Raising and Other Volunteers	493
Volunteer Boards and Committees	206
Donors	3,139

This summarized financial information is taken from financial statements audited by independent public accountants. Copies of the audited financial statements and IRS Form 990 are available for examination at the YMCA's office.

## 2022 Association Highlights

Raised over \$1.6 million in grant support.

Raised more than \$2 million through the Annual Campaign, special events, and donations to support children, families, and adults participating in YMCA programs.

Secured over \$150,000 at the 21<sup>st</sup> annual Kids to Camp Golf Tournament in support of summer camp scholarships.

Raised \$50,000 during Healthy Kids Day, an association-wide fundraising event in support of the Y's youth programs.

Welcomed three new members to the Y leadership family: Kim Cole, Vice President of Operations; Josslyn Grindle, Chief Human Resource Officer; and Bob Herr, Chief Financial Officer.

Approved a new floating holiday policy to provide more compensation for full-time exempt employees.

Celebrated Harold Sparrow's recognition by the Urban League of Greater Hartford, which presented him with its 2022 Bill Brown Community Leadership & Service Award.

Honored Camp Woodstock's capital campaign supporters at a donor reception event during the camp's centennial celebration weekend.

Launched three new board task forces: Growth Strategy—Future of the YMCA; Governance; and Strategic Planning.

Formed a Risk Management staff working group.

Received over 500 toys through HYPE's Tons of Toys drive, which were distributed to YMCA and community members.

Mourned the loss of two lifelong YMCA volunteers and former Robert C. Knox Jr./YMCA Distinguished Leadership Award Recipients: Harold (Hal) C. Buckingham, Jr. and Judith (Judy) A. Stearns. Judy was the first female board chair of the YMCA of Greater Hartford.

## Camp Jewell YMCA

Engaged over 1,200 campers through our overnight and day camp programs.

Served over 4,500 people through the return of our year-round programs and family camps, including a new scout group comprised of 500 participants.

Hosted a ribbon cutting event for the opening of new cabins.

Invested over \$200,000 in capital improvements, including a kitchen renovation.

Provided financial assistance to over 100 campers.

Grew revenue by more than \$1.2 million over the 2021 level.

## Camp Woodstock YMCA

Welcomed over 450 alumni to help commemorate the 100-year celebration weekend.

Opened a time capsule during the centennial celebration that had been buried a quarter-century ago during the 75<sup>th</sup> celebration.

Raised over \$1 million in capital campaign support, achieving 93% of our goal.

Completed Dining Hall renovations, which included a stone patio, outdoor pavilion, and expanded fields for programming.

Served over 1,200 campers and welcomed an additional 2,000 participants during the off season for retreats and conferences.

Raised over \$95,000 in Annual Campaign support.

Welcomed 128 campers who were able to attend camp thanks to financial assistance from the Y.

## Downtown YMCA

Followed the progress of 15 members of our girls' chess club.

Partnered with First Tee of Connecticut to offer golf lessons to 35 Hartford youth.

Provided swim safety lessons to 75 underserved youth.

Added swim lessons to the camp day for 35 campers.

Distributed 500 food buckets to families in Hartford and East Hartford, in conjunction with the efforts of the East Hartford Y.

## East Hartford YMCA

Graduated 30 children from the Larson Center and YCC preschools.

Distributed over 40 winter coats to families in need.

Celebrated nearly 100 K-5<sup>th</sup> grade scholars who participated in the BellXcell Power Scholars Academy.

Provided more than 27,000 meals and snacks to toddlers and preschoolers.

Hosted our first annual martial arts tournament with over 150 participants.

Distributed 500 food buckets to families in Hartford and East Hartford, in conjunction with the efforts of the Downtown Y.



## Farmington Valley YMCA

Provided swim lessons for almost 600 participants.

Cared for over 3,400 kids while their parents participated in YMCA programs.

Graduated 12 participants from the LIVESTRONG® at the Y program.

Supported 50 members during our fall Slimdown program and 41 participants in the inaugural Lazy Man Iron Man. All told, our members completed over 12,000 miles by swimming, biking, and running.

Recognized swimmer Mackenzie Headley for winning the 100-yard breaststroke at the Winter National Swim Team Championship.

Hosted 5 free lifeguard classes with a total of 36 participants and welcomed 8 of them as new YMCA employees.

Hosted three community events, including Healthy Kids Day, Halloween at the Y, and Breakfast with Santa, which engaged more than 1,000 community members.

Participated in the 6-week triathlon training program, Race 4 Chase, with 12 local athletes, culminating in a triathlon for over 600 athletes from across New England.

## Glastonbury Family YMCA

Raised over \$16,000 for the Annual Campaign at the Uncorking Possibilities Wine Tasting, where more than 100 community members came out in support of the event.

Held the annual Shred-a-Thon event with Infoshred LLC, RBC Wealth Management, and other local sponsors, which raised over \$2,000 toward our Annual Campaign.

Continued senior nutrition classes, which engaged up to 30 seniors each month.

Received 100% ACA Accreditation at Camp Glawackus.

## Hale YMCA Youth and Family Center

Provided 171 teens with free summer membership by way of a \$25,000 grant from the Beagary Trust.

Partnered with RiseUP 4 Arts and the Putnam Arts Council to install one of 39 regionally-created Martin Luther King, Jr. murals on the side of the Hale building.

Provided safety education to 81 children who participated in free Safety Around Water week.

Received a Race 4 Chase grant, which enabled 30 youth between the ages of 6 and 10 to participate in a 6-week triathlon training program.

Raised over \$47,000 during the Road to Wellness annual Spin-a-Thon, which supports the LIVESTRONG® at the Y cancer support program, in addition to other Y wellness programs.



## Indian Valley Family YMCA

Served 20,014 meals to children in our Rockville YMCA Child Development Center.

Restarted the LIVESTRONG® at the Y cancer support program after a 2-year hiatus and graduated 41 participants.

Raised over \$112,000 for the Annual Campaign.

Hosted the 5<sup>th</sup> Annual Spirits for Giving Gala, where over 180 guests enjoyed auctions, raffles, dinner, and tastings, and raised over \$29,000 for the Annual Campaign.

Partnered with the Adventure Park at Storrs and Code Ninjas to provide unique summer day camp experiences for campers.

Celebrated Head Coach Travis Morse and the Breakers Swim Team on their double championships, following their win of the YMCA Yankee Cluster League championships in both the spring short course and summer long course. Swimmers went on to compete in both YMCA Nationals and Futures meets.

Engaged over 175 participants at Healthy Kids Day.

## Tri-Town YMCA

Collaborated with the Wethersfield Early Childhood Collaborative to make the VRABE program (virtually and in person) available to families who speak English as a second language.

## West Hartford YMCA

Received a \$10,000 donation from the Vernon D. and Florence E. Roosa Family Foundation Memorial Fund at the Hartford Foundation for Public Giving. The award provides financial assistance to families in need, enabling them to send their children to summer camp.

Received \$6,000 from proceeds raised at Old Guard Golf Tournament.

Hosted a moving-up ceremony for 22 school-age children who participated in the BellXcel summer learning program.

Participated in the Celebrate West Hartford community event.

## Wheeler Regional Family YMCA

Partnered with American Red Cross to host 10 blood drives.

Hosted three LIVESTRONG® at the Y sessions and graduated 30 participants.

Renovated the steam room and added a new HVAC unit to the childcare wing.

Opened the Exergame interactive video fitness center.

Raised \$7,400 during the Mission Possible event to support the Annual Campaign.

Served more than 500 families at our Healthy Kids Day and Breakfast with Santa events for members and the community.

## Wilson-Gray YMCA Youth and Family Center

Launched the Young Men with Purpose program, designed to encourage male youth to be leaders, make positive choices, and help manage mental health challenges.

Received a multi-year collaborative grant from the Voya Foundation to support expanded STEAM advancement for elementary and middle school students through our Best Buy Teen Tech Center.

Hosted a Financial Literacy Youth Academy summer program for 19 high school students in conjunction with the Best Buy Teen Tech Center.

Held a ribbon-cutting ceremony to celebrate our new Teen Computer Lab in honor of the Gawlicki Family Foundation.

Started Fast Track tennis for students, ages 8 to 12, who learned the fundamentals and mechanics of tennis utilizing a new and innovative approach to the traditional sport.

**YMCA of Greater Hartford Branch Locations\***

**Camp Jewell YMCA**  
6 Prock Hill Road  
Colebrook, CT 06021  
1-888-412-2267  
Craig Dawson,  
Branch Executive  
Robert Stearns,  
Branch Board Chair

**Camp Woodstock YMCA**  
42 Camp Road  
Woodstock Valley, CT 06282  
1-800-782-2344  
Tony Gronski,  
Branch Executive  
Heather LeBlanc,  
Branch Board Chair

**Downtown YMCA**  
90 State House Square  
Hartford, CT 06103  
860-522-4183  
Laura Floyd,  
Branch Executive  
Lloyd Huie,  
Branch Board Chair

**East Hartford YMCA**  
770 Main Street  
East Hartford, CT 06108  
860-289-6612  
Laura Floyd,  
Branch Executive  
Ariel Robinson,  
Branch Board Chair

**Farmington Valley YMCA**  
97 Salmon Brook Street  
Granby, CT 06035  
860-653-5524  
Brian P. Liss,  
Branch Executive  
Scott Woodaman,  
Branch Board Chair

**Glastonbury Family/ Tri-Town YMCA**  
95 Oakwood Drive  
Glastonbury, CT 06033  
860-633-6548  
Sarah Ralston,  
Branch Executive  
Garrett Ludwig,  
Branch Board Chair

**Hale YMCA Youth and Family Center**  
9 Technology Park Drive  
Putnam, CT 06260  
860-315-9622  
Amanda Kelly,  
Branch Executive  
James Zahansky,  
Branch Board Chair

**Indian Valley YMCA**  
11 Pinney Street  
Ellington, CT 06029  
860-871-0008  
David Corricelli,  
Branch Executive  
Dan Cargill,  
Branch Board Chair

**West Hartford YMCA**  
149 Farmington Avenue  
Plainville, CT 06062  
860-521-5830  
Laura Prisco,  
Branch Executive  
Jocelyn Hillard,  
Branch Board Chair

**Wheeler Regional Family YMCA**  
149 Farmington Avenue  
Plainville, CT 06062  
860-793-9631  
Laura Prisco,  
Branch Executive  
Linda Coveney,  
Branch Board Chair

**Wilson-Gray YMCA Youth and Family Center**  
444 Albany Avenue  
Hartford, CT 06120  
860-241-9622  
Valencia Williams,  
Branch Executive  
Ronald Johnson,  
Branch Board Chair

**Metropolitan YMCA Staff\***

Harold Sparrow  
President and CEO

Kimberly Cole  
Chief Operating Officer

Susan Joyse  
Chief Development Officer

Josslyn Grindle  
Chief Human Resource Officer

Robert Herr  
Vice President of Finance and CFO

Jeff Williams  
Associate Vice President of Development

Gina Gaipa  
Association Director of Management Information Systems

Steve Phillips  
Director of Facilities

Lisa Paterson  
Association Director of Membership

Ronny Segura  
Director of Information Technology

Stacia Shaw  
Director of Development

Natalie Zembrzuski  
Director of Executive Relations

**Directors\***

Julianne Avallone  
Thomas Borner  
Dan Cargill

Julio Concepcion  
Linda Coveney  
Mike DeFeo

Jason Fazio  
Tamara Gloster  
Cora Hall

Jocelyn Hillard  
Lloyd Huie  
Ronald S. Johnson

Linda Knox  
Heather LeBlanc  
Garrett Ludwig

Jim Martin  
Timothy McGrath  
James Michel

Tom Mongellow  
Marino Monti  
Peter Olson

Thomas J. Rechen  
Tim Restall  
Ariel Robinson

Carmen Sierra  
Harold Sparrow  
Robert (Bob) Stearns

Scott Woodaman  
Jim Zahansky  
Diane Zalewski

Scott Zuffelatto

**Trustees\***

Peter Atherton  
Edward F. Bader  
Kim Bishop

Richard Burness  
John F. Byrnes  
Eric Clapprood

Maura Cochran  
Myron Congdon  
Ruth H. Grobe

Laurence Hale  
Chris Hocevar  
S. Edward Jeter

Phil Kane, Jr.  
Evelyn Karaj  
Annette Larabee

Coleman Levy, Esq.  
Sherry Manetta  
I. Charles Mathews

Richard G. McGeary  
Patrick Nickoletti  
Carolyn Paldino

Brewster B. Perkins  
Angela Phillips-Arrington  
JoAnn Price

Stacy Raney  
Lena Rodriguez  
Richard J. Shima

Arthur Snyder  
Dan Tracy  
Gary T. Wolff

**Officers\***

Peter Olson,  
Board Chair

Julianne Avallone,  
Vice Chair

Linda Knox,  
Vice Chair

Tom Rechen,  
Vice Chair

Scott Zuffelatto,  
Vice Chair

Rich Burness,  
Past Board Chair

Tim McGrath,  
Treasurer

Harold Sparrow,  
President and CEO

\*Current as of 12/31/2022

Credits: Harold Sparrow; President and CEO; Bob Herr, Vice President of Finance and CFO; Susan Joyse, Chief Development Officer; Gina Gaipa, Association Director of Management Information Systems; Jeff Williams, Associate Vice President of Development; Natalie Zembrzuski, Director of Executive Relations; Copywriting: Joel Samberg; Design: Christopher Passehl, Passehl Design; Photography: Nick Caito; Karen Arango; Printing: GHP

**Board of Directors**



Peter Olson  
CBRE | Global Workplace Solutions



Harold Sparrow  
YMCA of Greater Hartford



Julianne Avallone  
Department of Consumer Protection, State of Connecticut



Thomas Borner  
Borner, Smith, Aleman, Herzog & Cerrone, LLC



Dan Cargill  
Connecticut Coalition Against Domestic Violence



Julio Concepcion  
Metro Hartford Alliance



Linda Coveney  
Community Volunteer, Health Coach



Mike Defeo  
Coca-Cola Beverages Northeast



Jason Fazio  
JF IV Holdings, LLC



Tamara Gloster  
Norwich Public Schools



Cora Hall  
The Travelers



Jocelyn Hillard  
American Red Cross



Lloyd Huie  
Liberty Bank



Ronald S. Johnson, Esq.  
Law Office of Ronald S. Johnson and Associates



Linda Knox  
The Knox Group



Garrett Ludwig  
Diversified Design Technologies



Jim Martin  
Barnum Premier Client Group



Timothy McGrath  
UnitedHealthcare



James Michel  
Access Health CT



Tom Mongellow  
Connecticut Bankers Association



Marino Monti  
Voya Financial



Thomas J. Rechen  
McCarter & English, LLP



Tim Restall  
Hartford Yard Goats Baseball



Carmen Sierra  
City of Hartford



Robert (Bob) Stearns  
Lesro Industries



James Zahansky  
Weiss, Hale & Zahansky Strategic Wealth Advisors



Diane Zalewski  
Cigna HealthCare



Scott Zuffelatto  
Naismith Basketball Hall of Fame

Board Members not shown above: Heather LeBlanc; Ariel Robinson, Goodwin University; Scott Woodaman, Springfield College





CONGRATULATIONS CAMP WOODSTOCK: CELEBRATING 100 YEARS OF FRIENDSHIPS

